



# PARTS CATALOGUE

## AL115C (14D1) INDONESIA

---



1F14D-460E1

( )

AL115C  
PARTS CATALOGUE  
©2007 by Yamaha Motor Co., Ltd.  
1st edition, July 2007  
All rights reserved.  
Any reprinting or unauthorized use  
without the written permission of  
Yamaha Motor Co., Ltd.  
is expressly prohibited.  
Printed in Japan.

## FOREWORD

This Parts Catalogue is related to the parts for the model(s) on the cover page. When you are ordering replacement parts, please refer to this Parts Catalogue and quote both part numbers and part names correctly.

1. Modifications or additions which have been made after the issue of the Parts Catalogue will be announced in the Parts News.  
It is advisable that you make the necessary corrections to the Parts Catalogue according to the Parts News.

2. Abbreviations

The following abbreviations are used in this Parts Catalogue.

“UR” Use specified parts number.

“UN” Use as many as needed.

“AP” Alternate Parts

“LM” Locally Made (Parts need to be ordered locally)

“F#” Frame No. (Applicable machine No.)

“O/S” Over Size

3. The number of components for assembly

- Parts, which are to be supplied in an assembly, are listed with a dot (.) in front of the part name as shown below.
- The numeral appearing to the right of each component part indicates the quantity of parts for each assembly unit.

| PART NO.     | DESCRIPTION              | Q'TY | REMARKS |
|--------------|--------------------------|------|---------|
| 2F5-83310-60 | FRONT FLASHER LIGHT ASSY | 2    |         |
| 115-83311-60 | .BULB (6V-18W)           | 1    |         |

4. Applicable colours of graphics are represented in the “REMARKS” as shown below.

| PART NO.        | DESCRIPTION         | Q'TY | REMARKS |
|-----------------|---------------------|------|---------|
| 2N4-24110-00-X5 | FUEL TANK COMP.     | 2    | MXR     |
| 3J1-24240-10    | .GRAPHIC, FUEL TANK | 1    | FOR MXR |

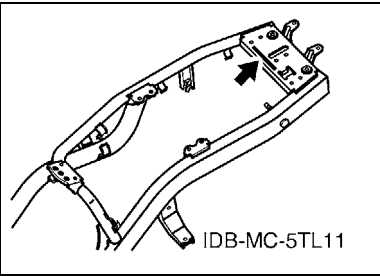
5. Note that the illustrations for reference in finding parts numbers are not to be used for assembling. When assembling, please use the applicable service manual.

6. The asterisk (\*) before a reference number indicates modified items after the first edition.

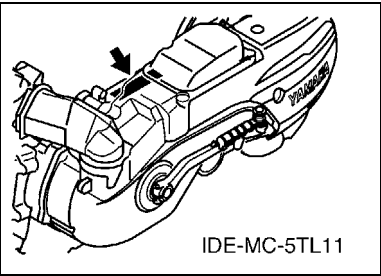
FOREWORD

7. Applicable Serial No.

Frame Serial No.



Engine Serial No.



8. Applicable Colour Code (The (\*) mark shows Model colour.)

| Abbreviation | Colour Name                   | Colour Code |
|--------------|-------------------------------|-------------|
| DPBMC(*)     | DEEP PURPLISH BLUE METALLIC C | 0564        |
| DRMK(*)      | DEEP RED METALLIC K           | 0918        |
| S3(*)        | SILVER 3                      | 0791        |
| SL           | SILVER                        | 0035        |
| SMX(*)       | BLACK METALLIC X              | 0903        |
| YB           | YAMAHA BLACK                  | 0033        |
|              |                               |             |
|              |                               |             |
|              |                               |             |
|              |                               |             |

9. Applicable Starting Serial No.

Frame Serial No.

| Serial No. | Name Of Q'ty Column | Model Code |
|------------|---------------------|------------|
|            |                     |            |
|            |                     |            |
|            |                     |            |
|            |                     |            |
|            |                     |            |

Engine Serial No.

| Serial No. | Name Of Q'ty Column | Model Code |
|------------|---------------------|------------|
|            |                     |            |
|            |                     |            |
|            |                     |            |
|            |                     |            |
|            |                     |            |

# CONTENTS

## ENGINE

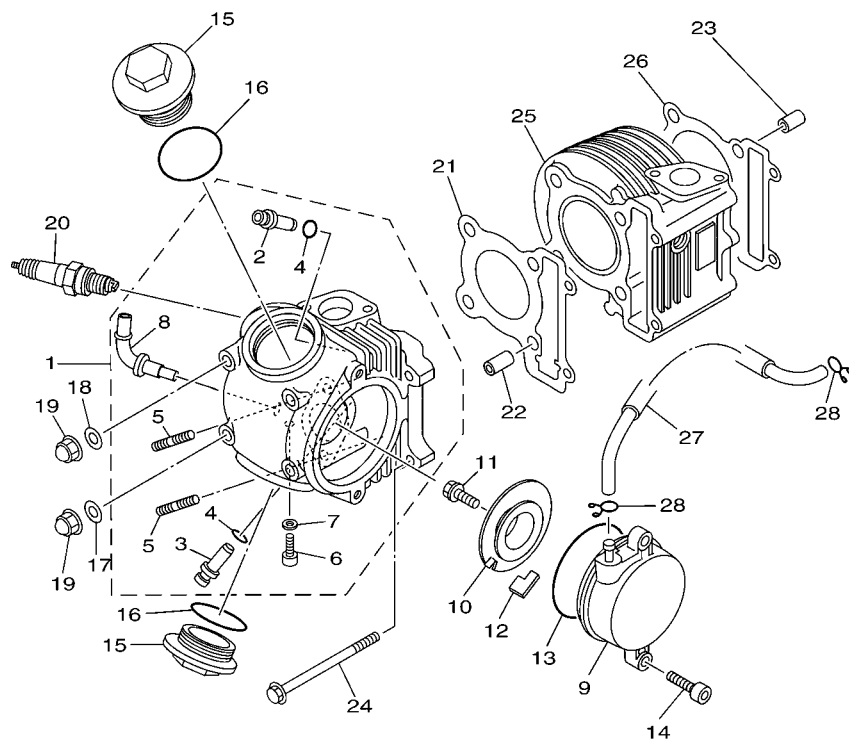
|                           |    |
|---------------------------|----|
| CYLINDER .....            | 1  |
| CRANKSHAFT & PISTON ..... | 3  |
| VALVE .....               | 4  |
| CAMSHAFT & CHAIN .....    | 5  |
| OIL PUMP .....            | 6  |
| AIR SHROUD & FAN .....    | 7  |
| INTAKE .....              | 8  |
| CARBURETOR .....          | 9  |
| EXHAUST .....             | 11 |
| CRANKCASE .....           | 13 |
| CRANKCASE COVER 1 .....   | 15 |
| STARTER .....             | 17 |
| CLUTCH .....              | 18 |
| TRANSMISSION .....        | 20 |

## CHASSIS

|                               |    |
|-------------------------------|----|
| FRAME .....                   | 21 |
| FENDER .....                  | 22 |
| SIDE COVER .....              | 23 |
| REAR ARM & SUSPENSION .....   | 25 |
| STEERING .....                | 26 |
| FUEL TANK .....               | 28 |
| SEAT .....                    | 29 |
| FRONT WHEEL .....             | 30 |
| FRONT BRAKE CALIPER .....     | 31 |
| REAR WHEEL .....              | 32 |
| STEERING HANDLE & CABLE ..... | 33 |
| FRONT MASTER CYLINDER .....   | 34 |
| STAND & FOOTREST .....        | 35 |
| LEG SHIELD .....              | 37 |
| GENERATOR .....               | 39 |
| STARTING MOTOR .....          | 40 |
| METER .....                   | 41 |
| HEADLIGHT .....               | 42 |
| TAILLIGHT .....               | 43 |
| HANDLE SWITCH & LEVER .....   | 44 |
| ELECTRICAL 1 .....            | 45 |
| ELECTRICAL 2 .....            | 46 |

## INDEX

|                       |    |
|-----------------------|----|
| NUMERICAL INDEX ..... | 47 |
|-----------------------|----|

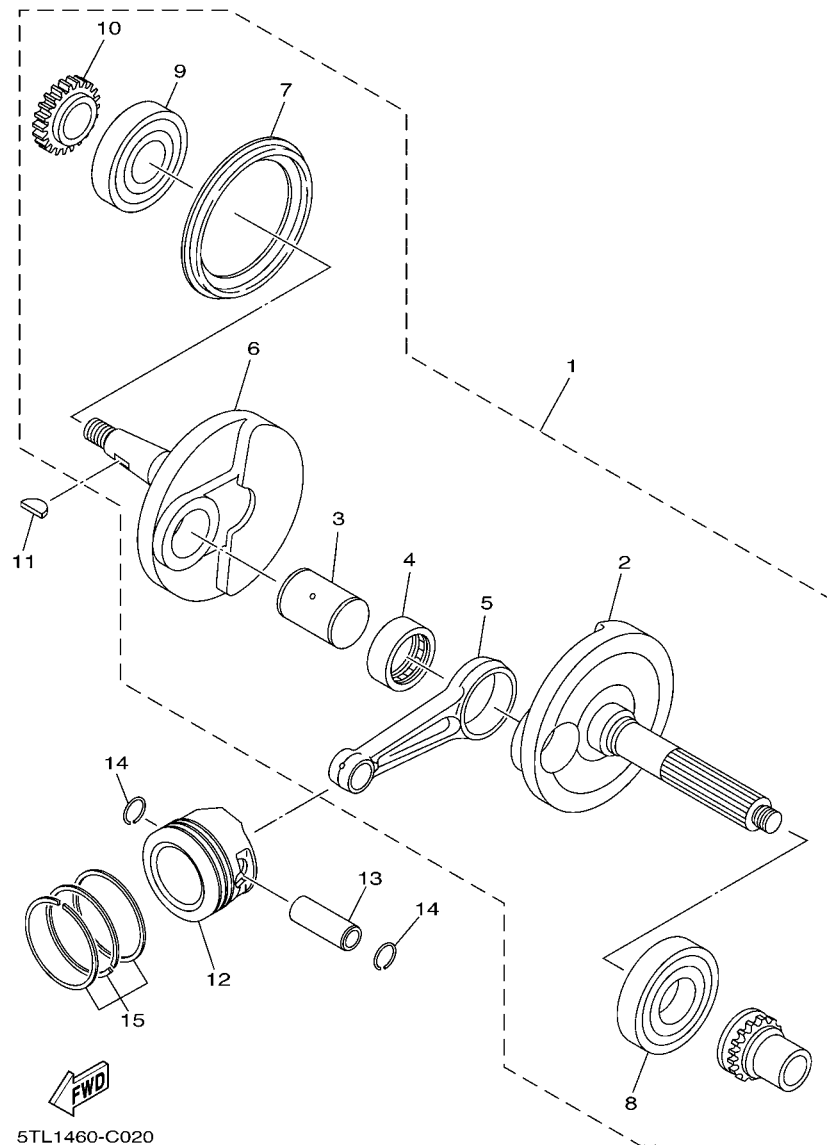


14D1460-F010

FIG. 1 CYLINDER

| REF. NO. | PART NO.     | DESCRIPTION                 | 14D1 |  |  |  | REMARKS |
|----------|--------------|-----------------------------|------|--|--|--|---------|
| 1        | 14D-E1102-00 | CYLINDER HEAD ASSY          | 1    |  |  |  | UR      |
|          | 5TL-E1102-10 | CYLINDER HEAD ASSY          | 1    |  |  |  | UR      |
| 2        | 5LW-11133-10 | .GUIDE, VALVE 1             | 1    |  |  |  |         |
| 3        | 5LW-11134-10 | .GUIDE, VALVE 2             | 1    |  |  |  |         |
| 4        | 93210-09800  | .O-RING                     | 2    |  |  |  |         |
| 5        | 90116-08806  | .BOLT, STUD                 | 2    |  |  |  |         |
| 6        | 90153-06803  | .SCREW, HEXAGON             | 1    |  |  |  |         |
| 7        | 90430-06014  | .GASKET                     | 1    |  |  |  |         |
| 8        | 5TL-E4871-00 | .PIPE 1                     | 1    |  |  |  |         |
| 9        | 5LW-E1185-00 | COVER, CYLINDER HEAD SIDE 1 | 1    |  |  |  |         |
| 10       | 5LW-E1165-00 | PLATE, BREATHER             | 1    |  |  |  |         |
| 11       | 5LW-E3185-00 | BOLT, BREATHER              | 1    |  |  |  |         |
| 12       | 5LW-E1155-00 | SEAL, LABYRINTH             | 1    |  |  |  |         |
| 13       | 93210-71462  | O-RING                      | 1    |  |  |  |         |
| 14       | 91317-06020  | BOLT                        | 2    |  |  |  |         |
| 15       | 4ST-E1186-00 | COVER, CYLINDER HEAD SIDE 2 | 2    |  |  |  |         |
| 16       | 93210-448G4  | O-RING                      | 2    |  |  |  |         |
| 17       | 90201-08609  | WASHER, PLATE               | 2    |  |  |  |         |
| 18       | 92907-08200  | WASHER                      | 2    |  |  |  |         |
| 19       | 90176-08805  | NUT, CROWN                  | 4    |  |  |  |         |
| 20       | 94700-00828  | PLUG SPARK (NGK C7HSA)      | 1    |  |  |  |         |
| 21       | 5LW-E1181-00 | GASKET, CYLINDER HEAD 1     | 1    |  |  |  |         |
| 22       | 91810-14809  | PIN, DOWEL                  | 2    |  |  |  |         |
| 23       | 91810-14809  | PIN, DOWEL                  | 2    |  |  |  |         |
| 24       | 95027-06100  | BOLT, FLANGE                | 2    |  |  |  |         |
| 25       | 5LW-E1310-00 | CYLINDER                    | 1    |  |  |  |         |
| 26       | 5LW-E1351-00 | GASKET, CYLINDER            | 1    |  |  |  |         |





**FIG. 2 CRANKSHAFT & PISTON**

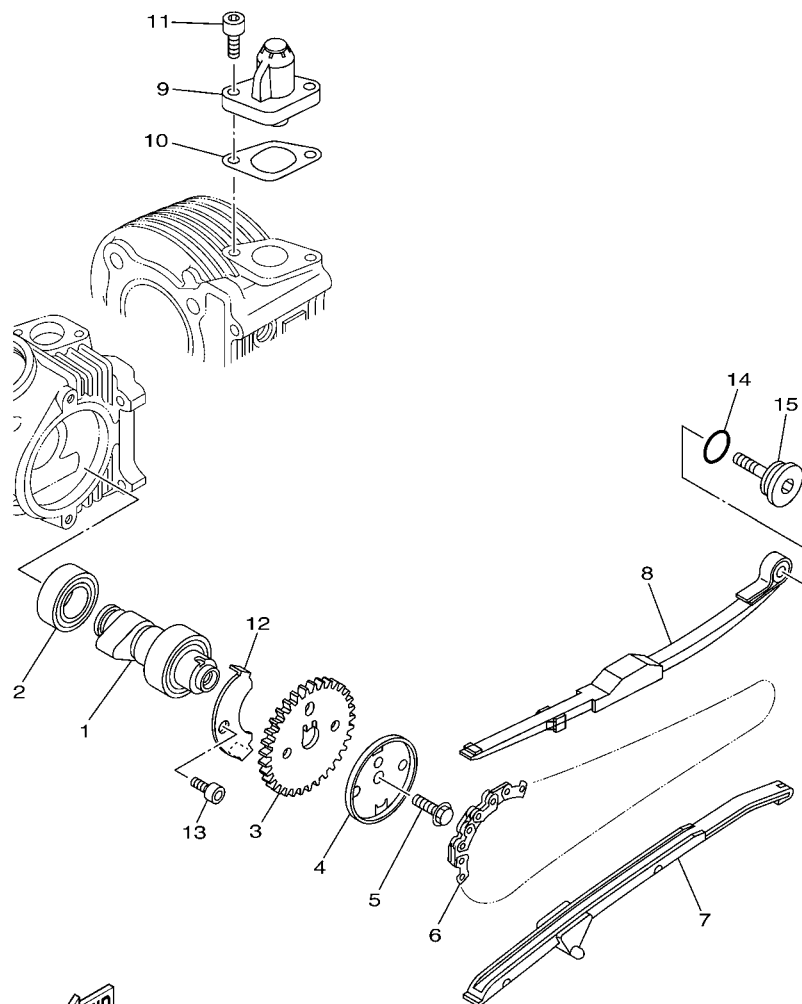
| REF. NO. | PART NO.     | DESCRIPTION                  | 14D1 |  |  |  | REMARKS |
|----------|--------------|------------------------------|------|--|--|--|---------|
| 1        | 2D5-E1400-00 | CRANKSHAFT ASSY              | 1    |  |  |  |         |
| 2        | 2D5-E1412-00 | .CRANK 1                     | 1    |  |  |  |         |
| 3        | 5MX-E1681-10 | .PIN, CRANK 1                | 1    |  |  |  |         |
| 4        | 93310-528Y8  | .BEARING                     | 1    |  |  |  |         |
| 5        | 5MX-E1651-01 | .ROD, CONNECTING             | 1    |  |  |  |         |
| 6        | 2D5-E1422-00 | .CRANK 2                     | 1    |  |  |  |         |
| 7        | 5LW-E3452-00 | .COVER, ROTOR FILTER         | 1    |  |  |  |         |
| 8        | 93306-305X3  | .BEARING                     | 1    |  |  |  |         |
| 9        | 93306-372Y2  | .BEARING                     | 1    |  |  |  |         |
| 10       | 5TL-E3324-00 | .GEAR, PUMP DRIVE            | 1    |  |  |  |         |
| 11       | 90280-03017  | KEY, WOODRUFF                | 1    |  |  |  |         |
| 12       | 5MX-E1631-00 | PISTON (STD)                 | 1    |  |  |  |         |
|          | 5MX-E1636-00 | PISTON (0.50MM O/S)          | 1    |  |  |  | AP      |
|          | 5MX-E1638-00 | PISTON (1.00MM O/S)          | 1    |  |  |  | AP      |
| 13       | 5MX-E1633-10 | PIN, PISTON                  | 1    |  |  |  |         |
| 14       | 93450-16068  | CIRCLIP                      | 2    |  |  |  |         |
| 15       | 5MX-E1603-00 | PISTON RING SET (STD)        | 1    |  |  |  |         |
|          | 5MX-E1605-00 | PISTON RING SET (0.50MM O/S) | 1    |  |  |  | AP      |
|          | 5MX-E1607-00 | PISTON RING SET (1.00MM O/S) | 1    |  |  |  | AP      |
|          |              |                              |      |  |  |  |         |
|          |              |                              |      |  |  |  |         |
|          |              |                              |      |  |  |  |         |





**FIG. 3 VALVE**

4

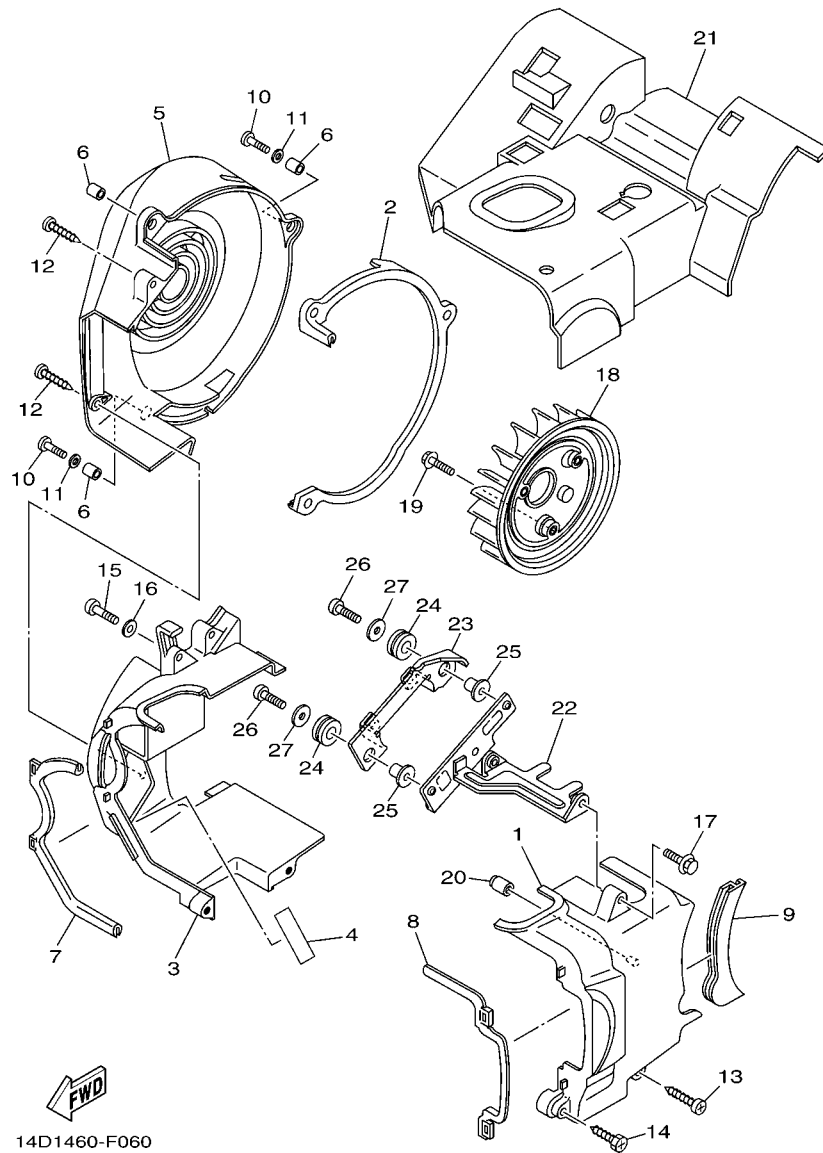


5TL1460-C041

FIG. 4 CAMSHAFT & CHAIN

| REF. NO. | PART NO.     | DESCRIPTION               | 14D1 |  |  |  | REMARKS |
|----------|--------------|---------------------------|------|--|--|--|---------|
| 1        | 5LW-E2170-10 | CAMSHAFT ASSY 1           | 1    |  |  |  |         |
| 2        | 93306-002X2  | BEARING                   | 1    |  |  |  |         |
| 3        | 5MX-E2176-00 | SPROCKET, CAM CHAIN       | 1    |  |  |  |         |
| 4        | 5MX-E1145-00 | PLATE, BREATHER 2         | 1    |  |  |  |         |
| 5        | 95817-08016  | BOLT, FLANGE              | 1    |  |  |  |         |
| 6        | 94568-B3090  | CHAIN                     | 1    |  |  |  |         |
| 7        | 5VV-E2231-00 | GUIDE, STOPPER 1          | 1    |  |  |  | UR      |
|          | 5LW-12231-00 | GUIDE, STOPPER 1          | 1    |  |  |  | UR      |
| 8        | 5MX-E2241-00 | GUIDE, STOPPER 2          | 1    |  |  |  | UR      |
|          | 5LW-12241-00 | GUIDE, STOPPER 2          | 1    |  |  |  | UR      |
| 9        | 5MX-E2210-10 | TENSIONER ASSY, CAM CHAIN | 1    |  |  |  |         |
| 10       | 5MX-E2213-00 | GASKET, TENSIONER CASE    | 1    |  |  |  |         |
| 11       | 91317-06016  | BOLT                      | 2    |  |  |  |         |
| 12       | 5LW-E111F-00 | PLATE                     | 1    |  |  |  |         |
| 13       | 91317-06012  | BOLT                      | 1    |  |  |  |         |
| 14       | 93210-15862  | O-RING                    | 1    |  |  |  |         |
| 15       | 4CW-E2157-00 | BOLT                      | 1    |  |  |  |         |
|          |              |                           |      |  |  |  |         |
|          |              |                           |      |  |  |  |         |
|          |              |                           |      |  |  |  |         |
|          |              |                           |      |  |  |  |         |





**FIG. 6 AIR SHROUD & FAN**

| REF. NO. | PART NO.     | DESCRIPTION            | 14D1 |  |  |  | REMARKS |
|----------|--------------|------------------------|------|--|--|--|---------|
| 1        | 5LW-E2651-00 | AIR SHROUD, CYLINDER 1 | 1    |  |  |  |         |
| 2        | 5LW-E2658-00 | DAMPER, AIR SHROUD 1   | 1    |  |  |  |         |
| 3        | 5LW-E2652-00 | AIR SHROUD, CYLINDER 2 | 1    |  |  |  |         |
| 4        | 5TL-E2682-00 | PROTECTOR, HEAT        | 1    |  |  |  |         |
| 5        | 14D-E2653-00 | AIR SHROUD, CYLINDER 3 | 1    |  |  |  |         |
| 6        | 90387-067V1  | COLLAR                 | 3    |  |  |  |         |
| 7        | 5LW-E2659-02 | DAMPER, AIR SHROUD 2   | 1    |  |  |  |         |
| 8        | 5LW-E2668-02 | DAMPER, AIR SHROUD 3   | 1    |  |  |  |         |
| 9        | 5TL-E2669-00 | DAMPER, AIR SHROUD 4   | 1    |  |  |  |         |
| 10       | 98507-06020  | SCREW, PAN HEAD        | 2    |  |  |  |         |
| 11       | 92907-06600  | WASHER, PLATE          | 2    |  |  |  |         |
| 12       | 97707-60530  | SCREW, TAPPING         | 2    |  |  |  |         |
| 13       | 97707-60530  | SCREW, TAPPING         | 1    |  |  |  |         |
| 14       | 97707-60430  | SCREW, TAPPING         | 1    |  |  |  |         |
| 15       | 98507-06025  | SCREW, PAN HEAD        | 1    |  |  |  |         |
| 16       | 92907-06600  | WASHER, PLATE          | 1    |  |  |  |         |
| 17       | 90105-06804  | BOLT, FLANGE           | 1    |  |  |  |         |
| 18       | 5LW-E2611-00 | FAN                    | 1    |  |  |  |         |
| 19       | 95027-06012  | BOLT, FLANGE           | 3    |  |  |  |         |
| 20       | 5LW-E3569-00 | PLUG, BLIND            | 1    |  |  |  |         |
| 21       | 5TL-E2631-10 | DEFLECTOR 1            | 1    |  |  |  |         |
| 22       | 5TL-E2681-10 | PLATE                  | 1    |  |  |  |         |
| 23       | 5TL-E2633-00 | PLATE                  | 1    |  |  |  |         |
| 24       | 90480-14817  | GROMMET                | 2    |  |  |  |         |
| 25       | 90387-06052  | COLLAR                 | 2    |  |  |  |         |
| 26       | 98507-06020  | SCREW, PAN HEAD        | 2    |  |  |  |         |
| 27       | 90201-06057  | WASHER, PLATE          | 2    |  |  |  |         |

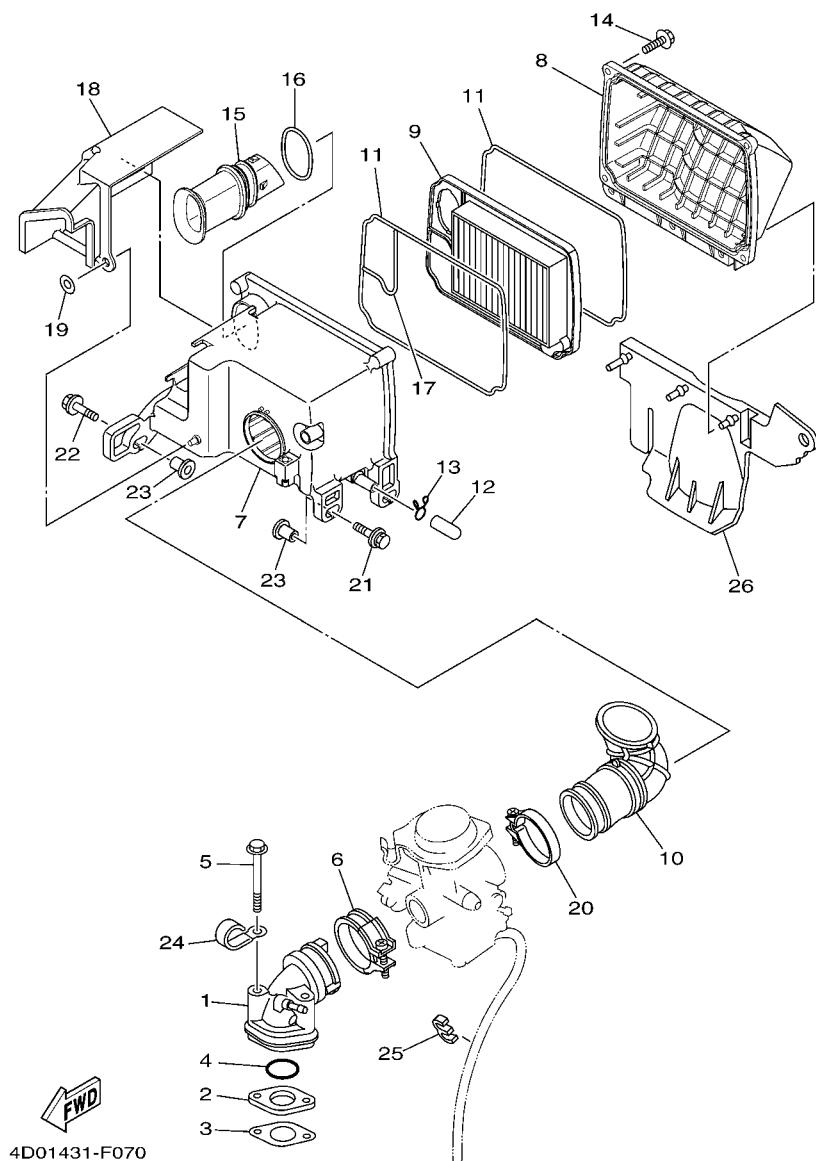
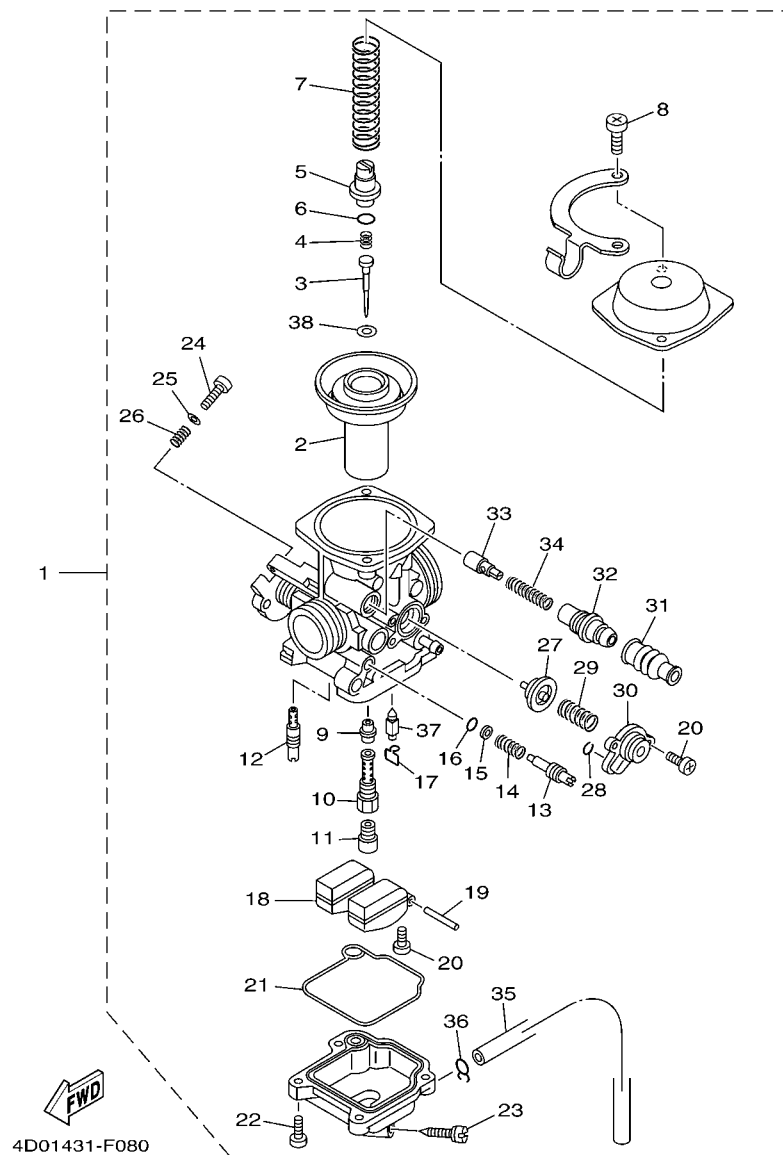


FIG. 7 INTAKE

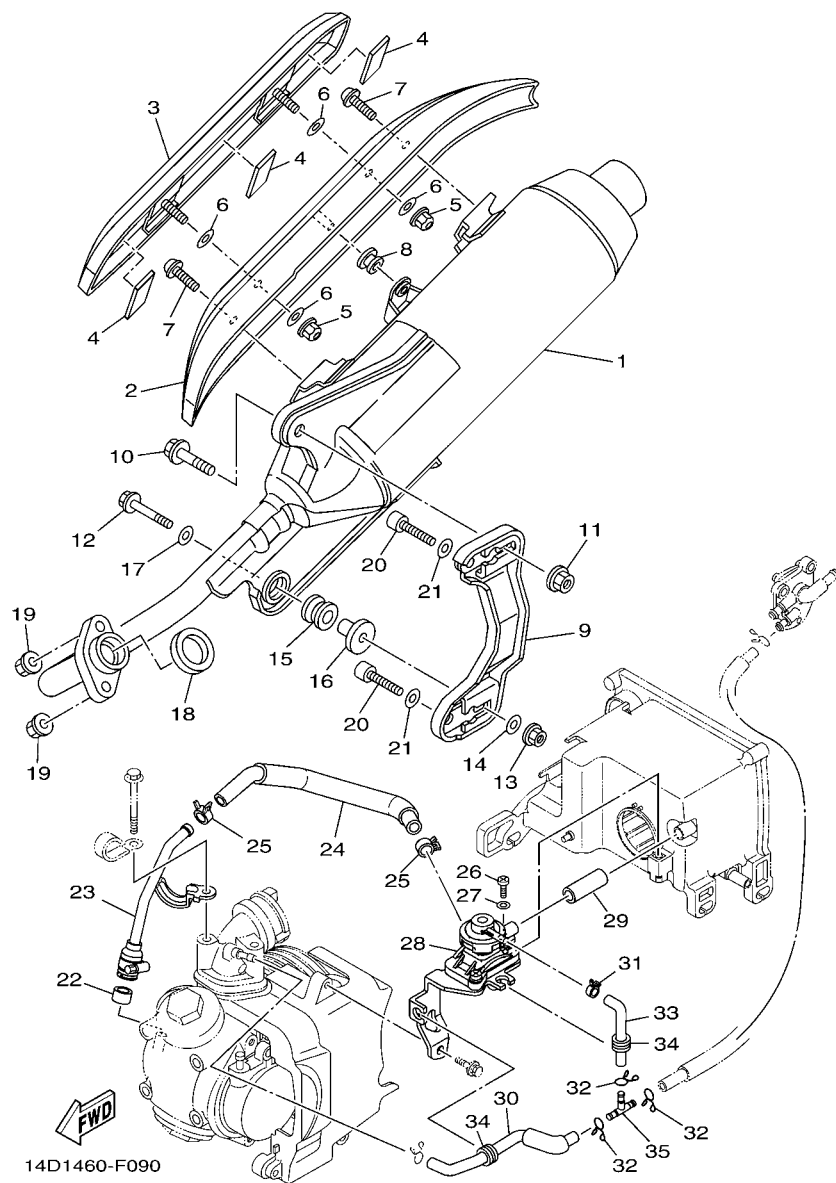
| REF. NO. | PART NO.     | DESCRIPTION              | 14D1 |  |  |  | REMARKS |
|----------|--------------|--------------------------|------|--|--|--|---------|
| 1        | 4D0-E3585-00 | MANIFOLD                 | 1    |  |  |  |         |
| 2        | 5MX-E3595-10 | JOINT                    | 1    |  |  |  |         |
| 3        | 5MX-E3556-01 | GASKET, MANIFOLD         | 1    |  |  |  |         |
| 4        | 93210-25803  | O-RING                   | 1    |  |  |  |         |
| 5        | 95817-06065  | BOLT, FLANGE             | 2    |  |  |  |         |
| 6        | 5MX-E3474-01 | BAND                     | 1    |  |  |  |         |
| 7        | 14D-E4411-00 | CASE, AIR CLEANER 1      | 1    |  |  |  |         |
| 8        | 14D-E4412-00 | CAP, CLEANER CASE 1      | 1    |  |  |  |         |
| 9        | 14D-WE445-00 | AIR CLEANER ELEMENT ASSY | 1    |  |  |  |         |
| 10       | 5TL-E4453-00 | JOINT, AIR CLEANER 1     | 1    |  |  |  |         |
| 11       | 5TL-E4452-00 | SEAL                     | 2    |  |  |  |         |
| 12       | 5TL-E443E-00 | PIPE, DRAIN              | 1    |  |  |  |         |
| 13       | 90467-12800  | CLIP                     | 1    |  |  |  |         |
| 14       | 90163-05803  | SCREW, TAPPING           | 5    |  |  |  |         |
| 15       | 14D-E4437-00 | DUCT                     | 1    |  |  |  |         |
| 16       | 14D-E4467-00 | SEAL                     | 1    |  |  |  |         |
| 17       | 5TL-E4462-00 | SEAL                     | 1    |  |  |  |         |
| 18       | 14D-E4417-00 | COVER 1                  | 1    |  |  |  |         |
| 19       | 92907-05200  | WASHER                   | 1    |  |  |  |         |
| 20       | 5MX-E3575-01 | BAND                     | 1    |  |  |  |         |
| 21       | 90119-06182  | BOLT, WITH WASHER        | 2    |  |  |  |         |
| 22       | 90119-06211  | BOLT, WITH WASHER        | 1    |  |  |  |         |
| 23       | 90387-06891  | COLLAR                   | 3    |  |  |  |         |
| 24       | 90462-08806  | CLAMP                    | 1    |  |  |  |         |
| 25       | 90464-60810  | CLAMP                    | 1    |  |  |  |         |
| 26       | 14D-F1691-00 | FLAP                     | 1    |  |  |  |         |



**FIG. 8 CARBURETOR**

| REF. NO. | PART NO.     | DESCRIPTION            | 14D1 |  |  |  | REMARKS |
|----------|--------------|------------------------|------|--|--|--|---------|
| 1        | 14D-E4901-00 | CARBURETOR ASSY 1      | 1    |  |  |  |         |
| 2        | 5TL-E4940-00 | .DIAPHRAGM ASSY        | 1    |  |  |  |         |
| 3        | 14D-E4416-00 | .JET NEEDLE COMP.      | 1    |  |  |  |         |
| 4        | 4D0-E4133-00 | .SPRING, THROTTLE STOP | 1    |  |  |  |         |
| 5        | 4D0-E4936-00 | .SEAT, SPRING          | 1    |  |  |  |         |
| 6        | 3TJ-14564-40 | .O-RING                | 1    |  |  |  |         |
| 7        | 5TL-E4933-00 | .SPRING, DIAPHRAGM     | 1    |  |  |  |         |
| 8        | 5TL-E4D25-00 | .SCREW, PAN HEAD       | 2    |  |  |  |         |
| 9        | 5TL-E4947-00 | .JET, NEEDLE           | 1    |  |  |  |         |
| 10       | 4D0-E414G-00 | .PIPE, MAIN BLEED      | 1    |  |  |  |         |
| 11       | 4D0-E4943-00 | .JET, MAIN (# 110)     | 1    |  |  |  |         |
| 12       | 5TL-E4948-02 | .JET (#38)             | 1    |  |  |  |         |
| 13       | 4D0-E4923-00 | .SCREW, PILOT          | 1    |  |  |  |         |
| 14       | 4JH-14160-00 | .COIL, SPRING          | 1    |  |  |  |         |
| 15       | 3TJ-14952-40 | .WASHER                | 1    |  |  |  |         |
| 16       | 3TJ-14562-40 | .O-RING                | 1    |  |  |  |         |
| 17       | 663-14159-00 | .CLIP                  | 1    |  |  |  |         |
| 18       | 5TL-E4985-00 | .FLOAT                 | 1    |  |  |  |         |
| 19       | 676-14548-00 | .PIN, FLOAT ARM        | 1    |  |  |  |         |
| 20       | 688-14592-00 | .SCREW                 | 3    |  |  |  |         |
| 21       | 5TL-E4984-00 | .GASKET, FLOAT CHAMBER | 1    |  |  |  |         |
| 22       | 98502-04012  | .SCREW, PAN HEAD       | 4    |  |  |  |         |
| 23       | 5TL-E4191-00 | .PLUG, DRAIN           | 1    |  |  |  |         |
| 24       | 5TL-E4922-00 | .SCREW, THROTTLE       | 1    |  |  |  |         |
| 25       | 4TV-14557-00 | .WASHER                | 1    |  |  |  |         |
| 26       | 5TL-E4531-00 | .SPRING, ADJUST SCREW  | 1    |  |  |  |         |
| 27       | 5TL-E4170-00 | .DIAPHRAGM ASSY        | 1    |  |  |  |         |





**FIG. 9 EXHAUST**

| REF. NO. | PART NO.     | DESCRIPTION              | 14D1 |  |  |  | REMARKS |
|----------|--------------|--------------------------|------|--|--|--|---------|
| 1        | 14D-E4610-00 | EXHAUST PIPE ASSY 1      | 1    |  |  |  |         |
| 2        | 14D-E4718-00 | PROTECTOR, MUFFLER 1     | 1    |  |  |  |         |
| 3        | 14D-E4728-00 | PROTECTOR, MUFFLER 2     | 1    |  |  |  |         |
| 4        | 14D-E4738-00 | PROTECTOR, MUFFLER 3     | 3    |  |  |  |         |
| 5        | 95707-06500  | NUT, FLANGE              | 2    |  |  |  |         |
| 6        | 92907-06200  | WASHER                   | 4    |  |  |  |         |
| 7        | 90111-06807  | BOLT, HEX. SOCKET BUTTON | 2    |  |  |  |         |
| 8        | 90480-10332  | GROMMET                  | 1    |  |  |  |         |
| 9        | 5TL-E4770-00 | STAY, MUFFLER 1          | 1    |  |  |  |         |
| 10       | 95817-10035  | BOLT, FLANGE             | 1    |  |  |  |         |
| 11       | 95707-10500  | NUT, FLANGE              | 1    |  |  |  |         |
| 12       | 95817-08045  | BOLT, FLANGE             | 1    |  |  |  |         |
| 13       | 90179-08577  | NUT                      | 1    |  |  |  |         |
| 14       | 90201-081R9  | WASHER, PLATE            | 1    |  |  |  |         |
| 15       | 5TL-E4747-00 | DAMPER, MUFFLER          | 1    |  |  |  |         |
| 16       | 5TL-E479M-10 | COLLAR 1                 | 1    |  |  |  |         |
| 17       | 90201-086P8  | WASHER, PLATE            | 1    |  |  |  |         |
| 18       | 14D-E4613-00 | GASKET, EXHAUST PIPE     | 1    |  |  |  |         |
| 19       | 95707-08500  | NUT, FLANGE              | 2    |  |  |  |         |
| 20       | 91317-08035  | BOLT                     | 2    |  |  |  |         |
| 21       | 90201-086P8  | WASHER, PLATE            | 2    |  |  |  |         |
| 22       | 42H-14714-10 | GASKET, MUFFLER          | 1    |  |  |  |         |
| 23       | 5TL-E4872-00 | PIPE 2                   | 1    |  |  |  |         |
| 24       | 14D-E4881-00 | HOSE, BEND 1             | 1    |  |  |  |         |
| 25       | 90467-13806  | CLIP                     | 2    |  |  |  |         |
| 26       | 98507-06014  | SCREW, PAN HEAD          | 1    |  |  |  |         |
| 27       | 92907-06600  | WASHER, PLATE            | 1    |  |  |  |         |





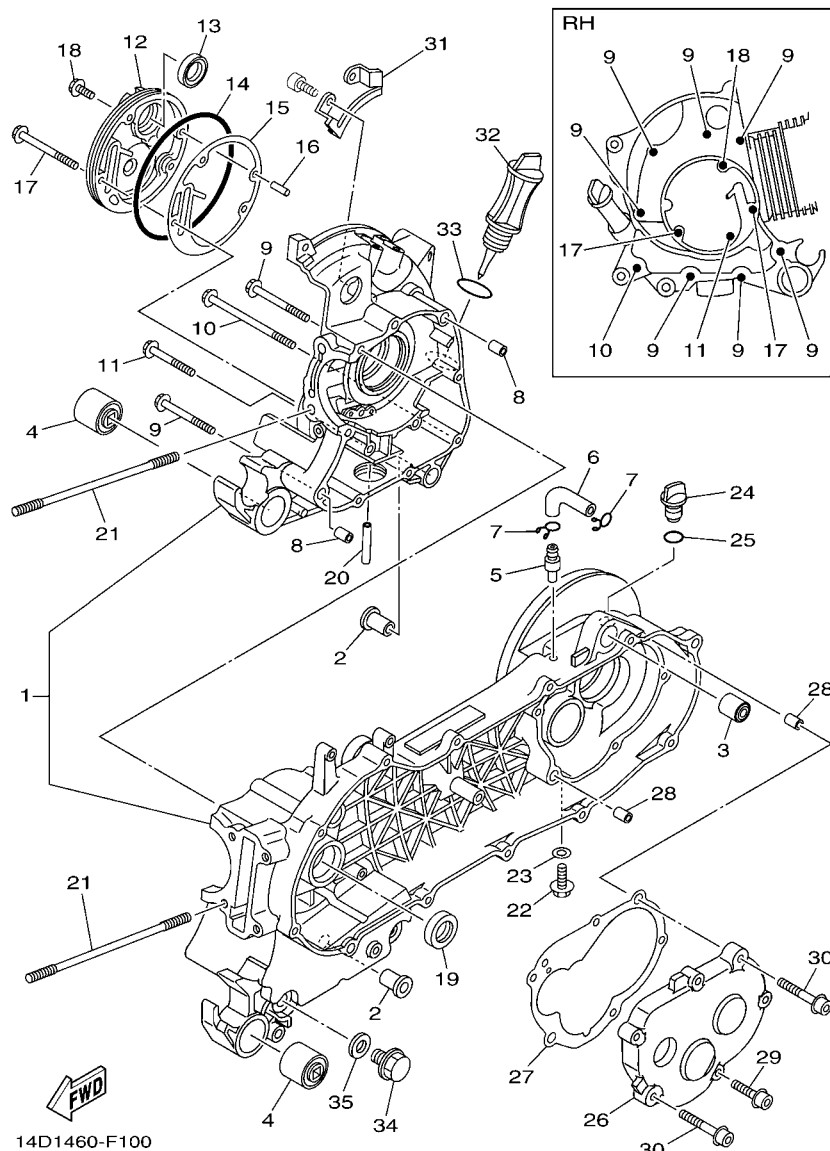


FIG. 10 CRANKCASE

| REF. NO. | PART NO.     | DESCRIPTION               | 14D1 |  |  |  | REMARKS |
|----------|--------------|---------------------------|------|--|--|--|---------|
| 1        | 5TL-E5150-10 | CRANKCASE ASSY            | 1    |  |  |  |         |
| 2        | 5MX-F7121-00 | BUSH                      | 2    |  |  |  |         |
| 3        | 164-22216-00 | BUSH, REAR SHOCK ABSORBER | 1    |  |  |  |         |
| 4        | 5TL-F2123-00 | BUSH 1                    | 2    |  |  |  |         |
| 5        | 5TL-E5371-00 | BREATHER                  | 1    |  |  |  |         |
| 6        | 5TL-E5373-00 | PIPE, BREATHER            | 1    |  |  |  |         |
| 7        | 90467-11106  | CLIP                      | 2    |  |  |  |         |
| 8        | 91810-14809  | PIN, DOWEL                | 2    |  |  |  |         |
| 9        | 95027-06060  | BOLT, FLANGE              | 7    |  |  |  |         |
| 10       | 95027-06100  | BOLT, FLANGE              | 1    |  |  |  |         |
| 11       | 95027-06050  | BOLT, FLANGE              | 1    |  |  |  |         |
| 12       | 5LW-E5417-00 | COVER, CAP                | 1    |  |  |  |         |
| 13       | 93102-19800  | OIL SEAL                  | 1    |  |  |  |         |
| 14       | 93211-07800  | O-RING                    | 1    |  |  |  |         |
| 15       | 5LW-E5453-00 | GASKET                    | 1    |  |  |  |         |
| 16       | 99480-05010  | PIN                       | 1    |  |  |  |         |
| 17       | 95027-06070  | BOLT, FLANGE              | 2    |  |  |  |         |
| 18       | 95027-06016  | BOLT, FLANGE              | 1    |  |  |  |         |
| 19       | 93102-22810  | OIL SEAL                  | 1    |  |  |  |         |
| 20       | 5LW-E3416-00 | PIPE, OIL 1               | 1    |  |  |  |         |
| 21       | 5MX-E1391-00 | BOLT, STUD 1              | 4    |  |  |  |         |
| 22       | 95817-08016  | BOLT, FLANGE              | 1    |  |  |  |         |
| 23       | 90430-08119  | GASKET                    | 1    |  |  |  |         |
| 24       | 5LW-E5363-00 | PLUG, OIL                 | 1    |  |  |  |         |
| 25       | 93210-148H8  | O-RING                    | 1    |  |  |  |         |
| 26       | 14D-E5421-00 | COVER, CRANKCASE 2        | 1    |  |  |  |         |
| 27       | 14D-E5461-00 | GASKET, CRANKCASE COVER 2 | 1    |  |  |  |         |

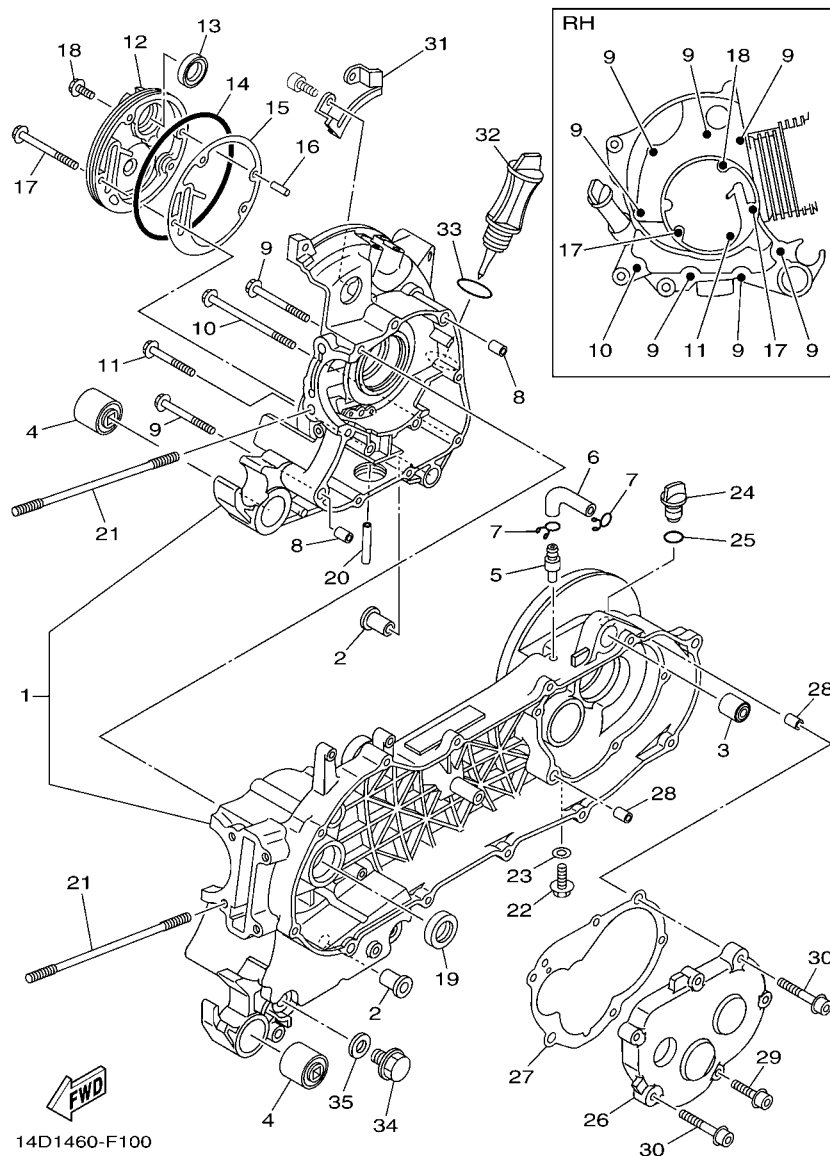


FIG. 10 CRANKCASE

| <b>REF.<br/>NO.</b> | <b>PART NO.</b> | <b>DESCRIPTION</b>        | <b>QTY<br/>REQD</b> | <b>UNIT</b> | <b>MATERIAL CODE</b> | <b>SOURCE CODE</b> | <b>REMARKS</b> |
|---------------------|-----------------|---------------------------|---------------------|-------------|----------------------|--------------------|----------------|
| 28                  | 91810-14809     | PIN, DOWEL                | 2                   |             |                      |                    |                |
| 29                  | 90110-06846     | BOLT, HEXAGON SOCKET HEAD | 4                   |             |                      |                    |                |
| 30                  | 90110-06849     | BOLT, HEXAGON SOCKET HEAD | 2                   |             |                      |                    |                |
| 31                  | 5LW-E5113-00    | PLATE                     | 1                   |             |                      |                    |                |
| 32                  | 5TL-E5362-00    | PLUG, OIL LEVEL           | 1                   |             |                      |                    |                |
| 33                  | 5LW-E3769-00    | O-RING                    | 1                   |             |                      |                    |                |
| 34                  | 90340-12808     | PLUG, STRAIGHT SCREW      | 1                   |             |                      |                    |                |
| 35                  | 4YS-E1198-00    | GASKET                    | 1                   |             |                      |                    |                |
|                     |                 |                           |                     |             |                      |                    |                |
|                     |                 |                           |                     |             |                      |                    |                |
|                     |                 |                           |                     |             |                      |                    |                |
|                     |                 |                           |                     |             |                      |                    |                |
|                     |                 |                           |                     |             |                      |                    |                |
|                     |                 |                           |                     |             |                      |                    |                |
|                     |                 |                           |                     |             |                      |                    |                |
|                     |                 |                           |                     |             |                      |                    |                |

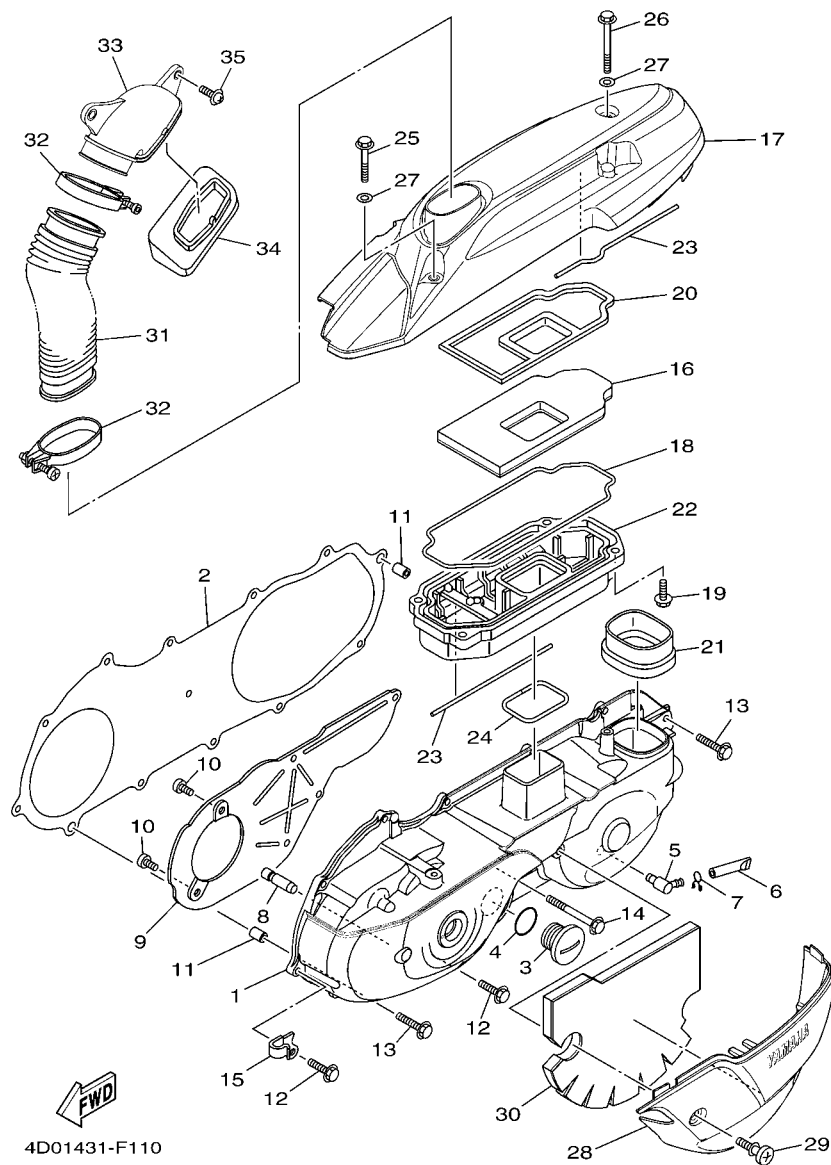


FIG. 11 CRANKCASE COVER 1

| REF. NO. | PART NO.     | DESCRIPTION               | 14D1 |  |  |  | REMARKS |
|----------|--------------|---------------------------|------|--|--|--|---------|
| 1        | 14D-E5411-00 | COVER, CRANKCASE 1        | 1    |  |  |  |         |
| 2        | 5LW-E5451-00 | GASKET, CRANKCASE COVER 1 | 1    |  |  |  |         |
| 3        | 90340-32805  | PLUG, STRAIGHT SCREW      | 1    |  |  |  |         |
| 4        | 93210-328G3  | O-RING                    | 1    |  |  |  |         |
| 5        | 5LW-E5371-01 | BREATHER                  | 1    |  |  |  |         |
| 6        | 4ST-E443E-00 | PIPE, DRAIN               | 1    |  |  |  |         |
| 7        | 90467-11106  | CLIP                      | 1    |  |  |  |         |
| 8        | 5LW-15659-01 | SHAFT                     | 1    |  |  |  |         |
| 9        | 14D-E5191-00 | PLATE                     | 1    |  |  |  |         |
| 10       | 98907-06010  | SCREW, BIND               | 6    |  |  |  |         |
| 11       | 91810-14809  | PIN, DOWEL                | 2    |  |  |  |         |
| 12       | 95027-06025  | BOLT, FLANGE              | 10   |  |  |  |         |
| 13       | 95027-06035  | BOLT, FLANGE              | 2    |  |  |  |         |
| 14       | 95027-06060  | BOLT, FLANGE              | 1    |  |  |  |         |
| 15       | 90462-10802  | CLAMP                     | 1    |  |  |  |         |
| 16       | 14D-E5407-00 | ELEMENT 1                 | 1    |  |  |  |         |
| 17       | 14D-E5333-00 | COVER                     | 1    |  |  |  |         |
| 18       | 14D-E5472-00 | SEAL, AIR DUCT            | 1    |  |  |  |         |
| 19       | 90119-05804  | BOLT, WITH WASHER         | 4    |  |  |  |         |
| 20       | 14D-E5497-00 | PLATE, DUST SEAL          | 1    |  |  |  |         |
| 21       | 5TL-E5475-00 | DUCT, AIR                 | 1    |  |  |  |         |
| 22       | 14D-E5492-00 | COVER                     | 1    |  |  |  |         |
| 23       | 14D-E5315-00 | SEAL, CRANKCASE           | 2    |  |  |  |         |
| 24       | 5TL-E5494-00 | SEAL, PROTECTOR           | 1    |  |  |  |         |
| 25       | 95027-06040  | BOLT, FLANGE              | 1    |  |  |  |         |
| 26       | 95027-06060  | BOLT, FLANGE              | 1    |  |  |  |         |
| 27       | 92907-06200  | WASHER                    | 2    |  |  |  |         |

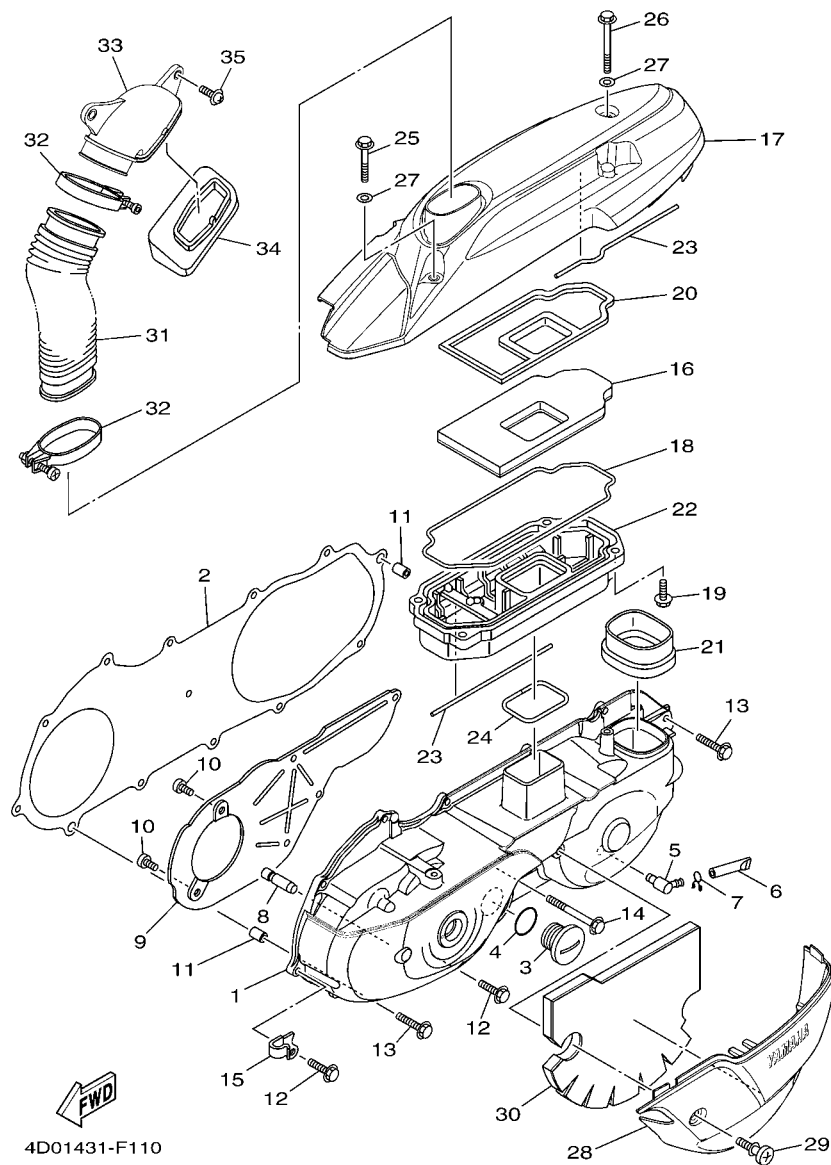
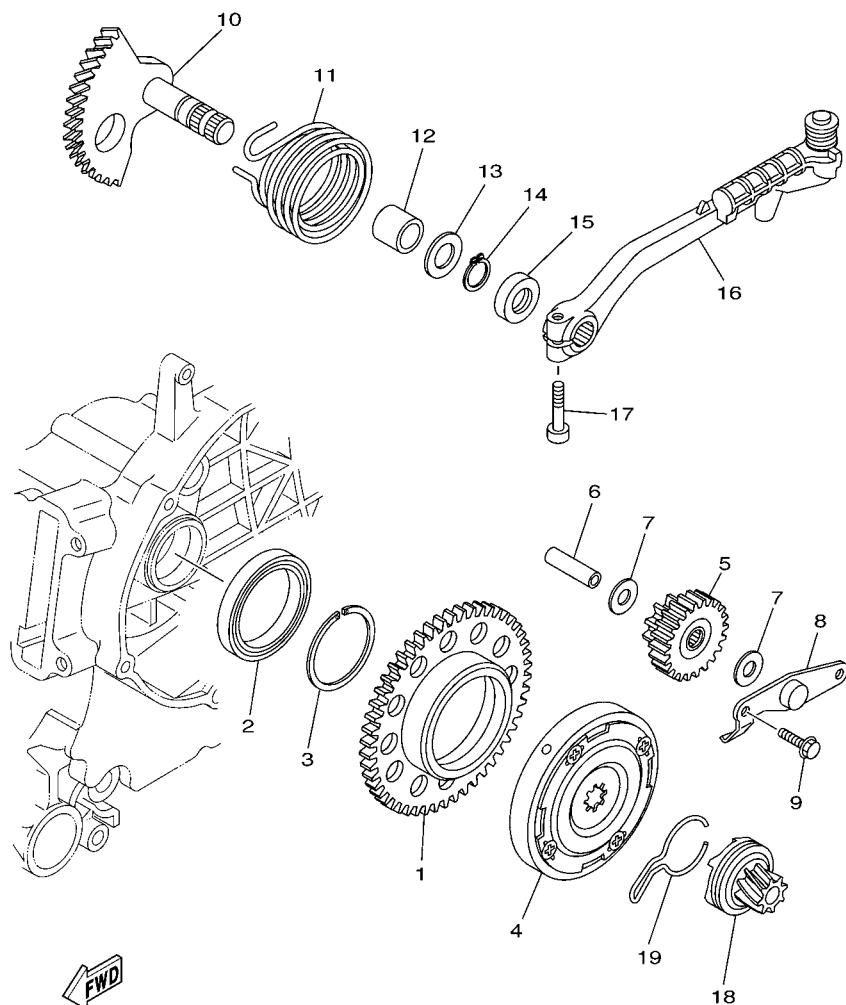


FIG. 11 CRANKCASE COVER 1

[illegible]



5VV2431-D120

FIG. 12 STARTER

| REF. NO. | PART NO.     | DESCRIPTION           | 14D1 |  |  |  | REMARKS |
|----------|--------------|-----------------------|------|--|--|--|---------|
| 1        | 5TL-E5524-00 | WHEEL, STARTER        | 1    |  |  |  |         |
| 2        | 93306-809Y0  | BEARING               | 1    |  |  |  |         |
| 3        | 93440-45827  | CIRCLIP               | 1    |  |  |  |         |
| 4        | 5VV-E5570-10 | STARTER CLUTCH ASSY   | 1    |  |  |  |         |
| 5        | 5TL-E5650-10 | IDLE GEAR ASSY        | 1    |  |  |  |         |
| 6        | 5LW-15521-00 | SHAFT 1               | 1    |  |  |  |         |
| 7        | 90201-10018  | WASHER, PLATE         | 2    |  |  |  |         |
| 8        | 5LW-E5532-00 | PLATE, IDLE GEAR      | 1    |  |  |  |         |
| 9        | 95027-06012  | BOLT, FLANGE          | 2    |  |  |  |         |
| 10       | 5TL-E5601-10 | KICK SHAFT ASSY       | 1    |  |  |  |         |
| 11       | 90508-32768  | SPRING, TORSION       | 1    |  |  |  |         |
| 12       | 90380-15800  | BUSH, SOLID           | 1    |  |  |  |         |
| 13       | 90201-154E8  | WASHER, PLATE (T=1.0) | 1    |  |  |  |         |
| 14       | 99009-15400  | CIRCLIP               | 1    |  |  |  |         |
| 15       | 93102-15801  | OIL SEAL              | 1    |  |  |  |         |
| 16       | 5TL-E5620-00 | KICK CRANK ASSY       | 1    |  |  |  |         |
| 17       | 91317-06025  | BOLT                  | 1    |  |  |  |         |
| 18       | 4VP-E5630-00 | KICK PINION ASSY      | 1    |  |  |  |         |
| 19       | 5MX-E5673-00 | CLIP                  | 1    |  |  |  |         |
|          |              |                       |      |  |  |  |         |
|          |              |                       |      |  |  |  |         |
|          |              |                       |      |  |  |  |         |

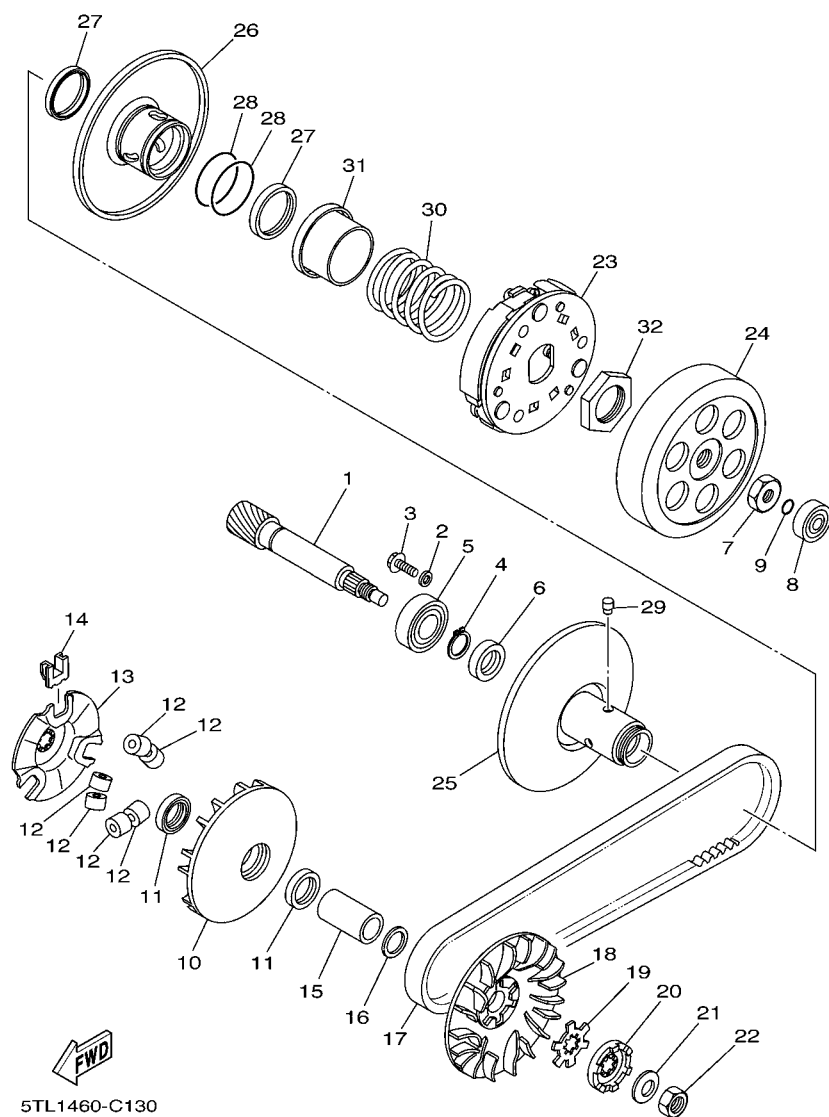


FIG. 13 CLUTCH

| REF. NO. | PART NO.     | DESCRIPTION                  | 14D1 |  |  |  | REMARKS |
|----------|--------------|------------------------------|------|--|--|--|---------|
| 1        | 2D5-E6111-00 | GEAR, PRIMARY DRIVE          | 1    |  |  |  |         |
| 2        | 90201-06060  | WASHER, PLATE                | 1    |  |  |  |         |
| 3        | 95027-06010  | BOLT, FLANGE                 | 1    |  |  |  |         |
| 4        | 99009-17400  | CIRCLIP                      | 1    |  |  |  |         |
| 5        | 93306-203YY  | BEARING                      | 1    |  |  |  |         |
| 6        | 93102-17803  | OIL SEAL                     | 1    |  |  |  |         |
| 7        | 90170-10317  | NUT                          | 1    |  |  |  |         |
| 8        | 93300-638Y6  | BEARING                      | 1    |  |  |  |         |
| 9        | 93210-06800  | O-RING                       | 1    |  |  |  |         |
| 10       | 5LW-E7620-00 | PRIMARY SLIDING SHEAVE COMP. | 1    |  |  |  |         |
| 11       | 93101-21803  | OIL SEAL                     | 2    |  |  |  |         |
| 12       | 4VP-17632-00 | WEIGHT                       | 6    |  |  |  |         |
| 13       | 5TL-E7623-00 | CAM                          | 1    |  |  |  |         |
| 14       | 5LW-17653-00 | SLIDER                       | 3    |  |  |  |         |
| 15       | 90387-16811  | COLLAR                       | 1    |  |  |  |         |
| 16       | 90201-16008  | WASHER, PLATE                | 1    |  |  |  |         |
| 17       | 5TL-E7641-01 | V-BELT                       | 1    |  |  |  |         |
| 18       | 5TL-E7611-00 | SHEAVE, PRIMARY FIXED        | 1    |  |  |  |         |
| 19       | 90214-14002  | WASHER, CLAW                 | 1    |  |  |  |         |
| 20       | 5MX-E5657-00 | CLUTCH, ONEWAY               | 1    |  |  |  |         |
| 21       | 90208-12050  | WASHER, CONICAL SPRING       | 1    |  |  |  |         |
| 22       | 95307-12700  | NUT                          | 1    |  |  |  |         |
| 23       | 14D-E6620-00 | CLUTCH CARRIER ASSY          | 1    |  |  |  |         |
| 24       | 5TL-E6611-02 | CLUTCH HOUSING COMP.         | 1    |  |  |  |         |
| 25       | 5TL-E7660-00 | SECONDARY FIXED SHEAVE COMP. | 1    |  |  |  |         |
| 26       | 5TL-E7670-00 | SECONDARY SLIDING SHEAVE     | 1    |  |  |  |         |
| 27       | 5TL-E7465-00 | SEAL, FELT                   | 2    |  |  |  |         |

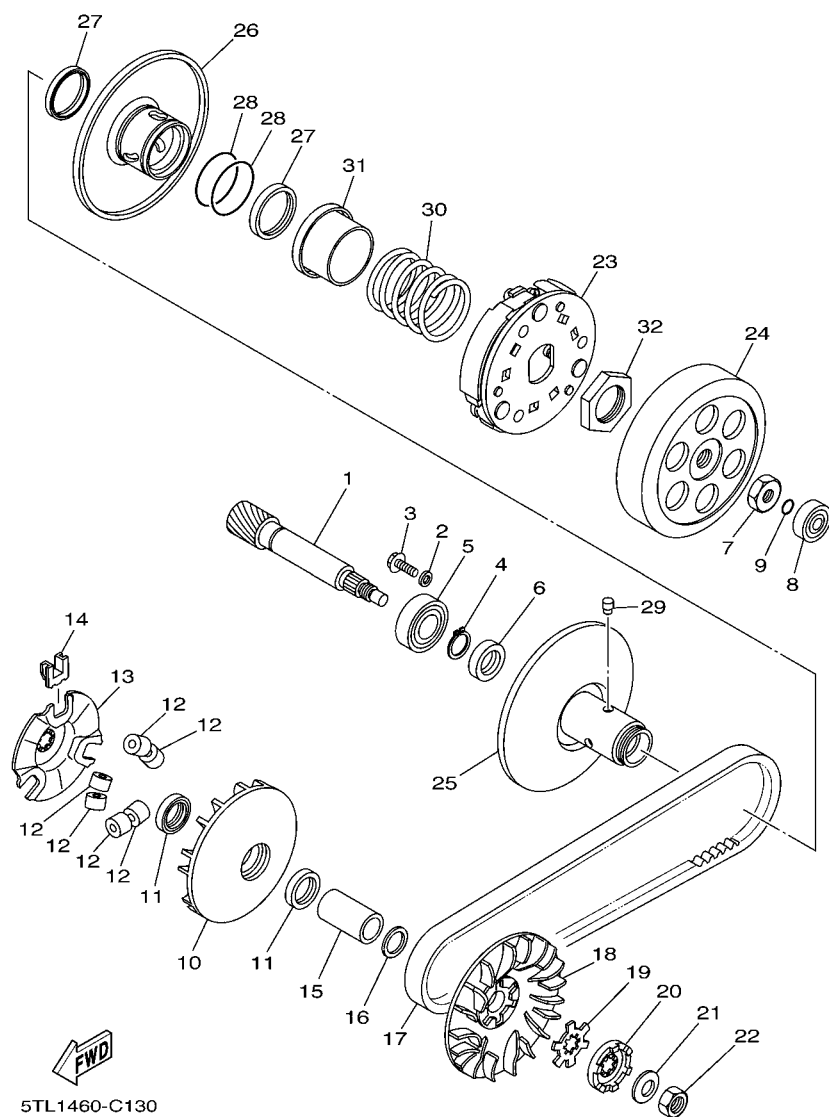


FIG. 13 CLUTCH

[illegible]



[illegible]

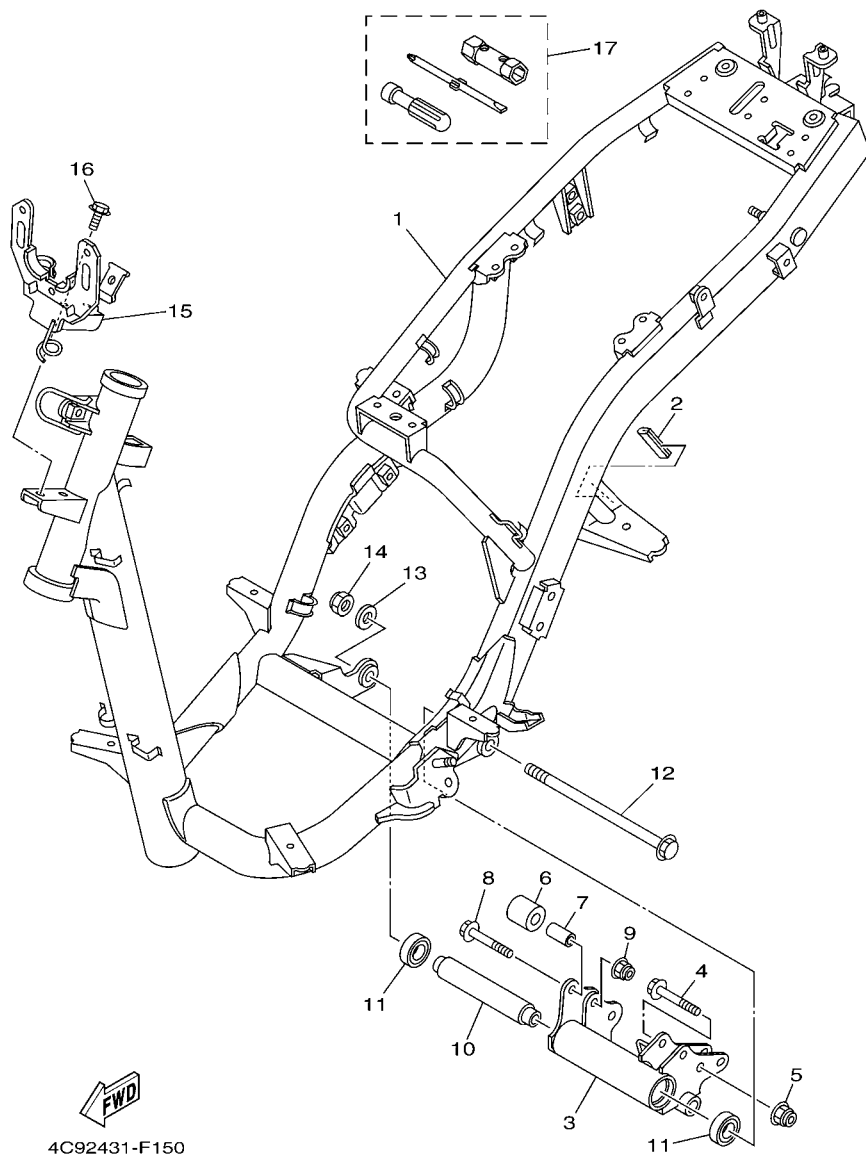
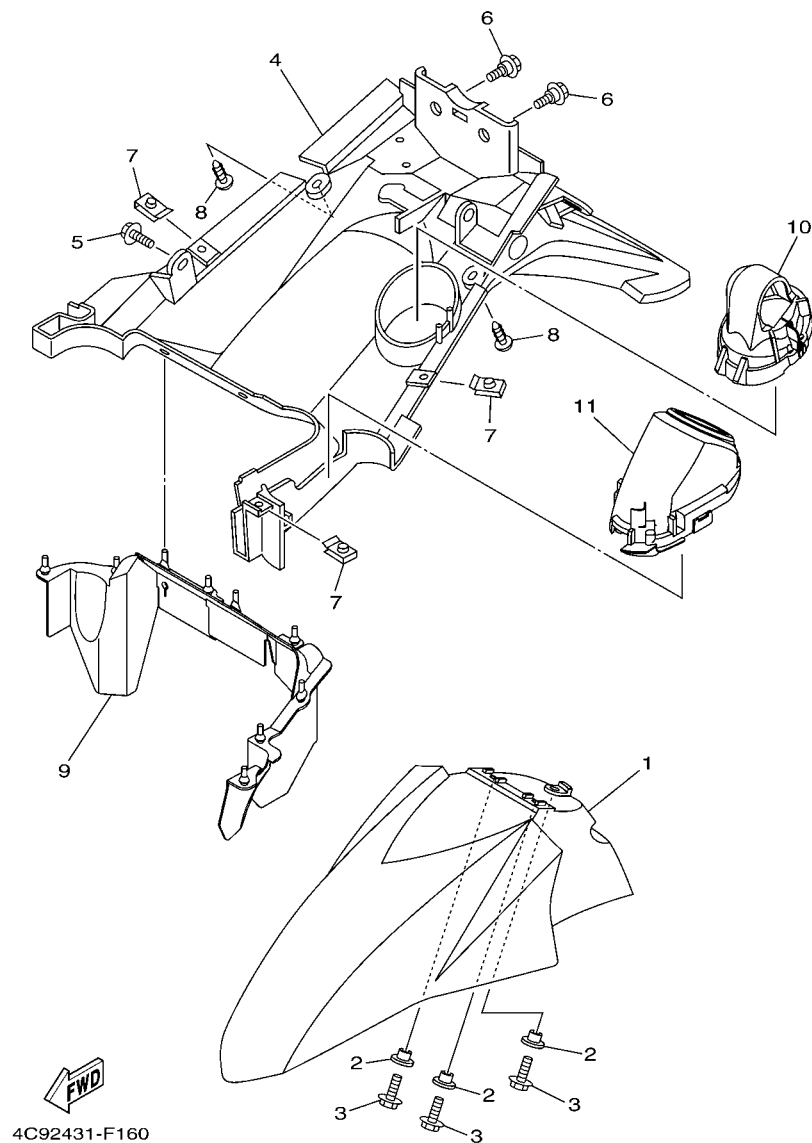


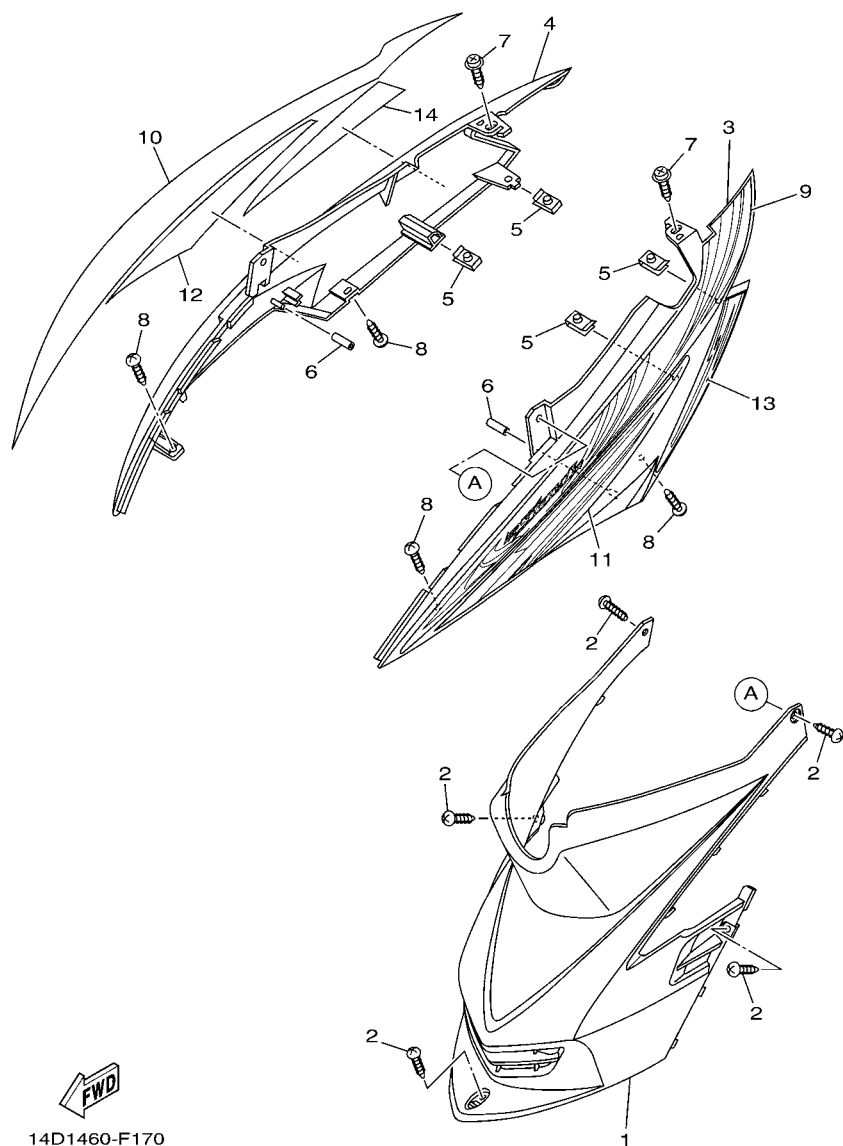
FIG. 15 FRAME

| REF. NO. | PART NO.     | DESCRIPTION          | 14D1 |  |  |  | REMARKS |
|----------|--------------|----------------------|------|--|--|--|---------|
| 1        | 14D-F1110-00 | FRAME COMP.          | 1    |  |  |  |         |
| 2        | 14D-F1278-00 | MOLD                 | 1    |  |  |  |         |
| 3        | 5TL-F1410-00 | ENGINE BRACKET COMP. | 1    |  |  |  |         |
| 4        | 90105-10066  | BOLT, FLANGE         | 2    |  |  |  |         |
| 5        | 9560L-10200  | NUT, SELF-LOCKING    | 2    |  |  |  |         |
| 6        | 5MX-F7114-00 | STOPPER, MAIN STAND  | 2    |  |  |  |         |
| 7        | 90387-08754  | COLLAR               | 2    |  |  |  |         |
| 8        | 90105-08048  | BOLT, FLANGE         | 2    |  |  |  |         |
| 9        | 95607-08200  | NUT, SELF-LOCKING    | 2    |  |  |  |         |
| 10       | 5TL-F1459-00 | SPACER               | 1    |  |  |  |         |
| 11       | 93306-003X7  | BEARING              | 2    |  |  |  |         |
| 12       | 5TL-F5181-00 | AXLE, WHEEL          | 1    |  |  |  |         |
| 13       | 90201-12688  | WASHER, PLATE        | 1    |  |  |  |         |
| 14       | 90185-12802  | NUT, SELF-LOCKING    | 1    |  |  |  |         |
| 15       | 14D-F8356-00 | STAY 1               | 1    |  |  |  |         |
| 16       | 95807-06012  | BOLT, FLANGE         | 2    |  |  |  |         |
| 17       | 5TL-F8100-00 | TOOL KIT             | 1    |  |  |  |         |
|          |              |                      |      |  |  |  |         |
|          |              |                      |      |  |  |  |         |
|          |              |                      |      |  |  |  |         |
|          |              |                      |      |  |  |  |         |



**FIG. 16 FENDER**

[illegible]

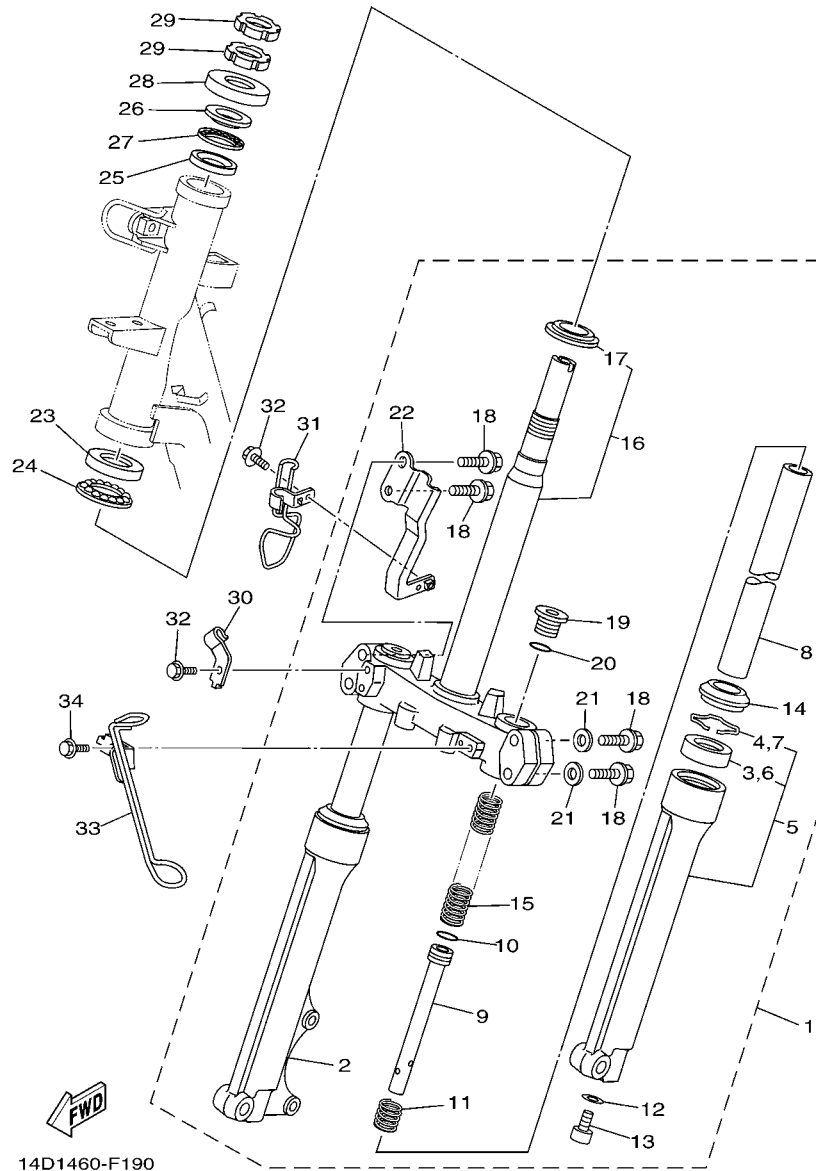


**FIG. 17 SIDE COVER**

| REF. NO. | PART NO.        | DESCRIPTION               | 14D1 |  |  |  | REMARKS      |
|----------|-----------------|---------------------------|------|--|--|--|--------------|
| 1        | 14D-F172W-00    | COVER                     | 1    |  |  |  |              |
| 2        | 97707-50016     | SCREW, TRUSS HEAD TAPPING | 5    |  |  |  |              |
| 3        | 14D-F1711-00-P0 | COVER, SIDE 1             | 1    |  |  |  | UR FOR SMX   |
|          | 14D-F1711-00-P1 | COVER, SIDE 1             | 1    |  |  |  | UR FOR DPBMC |
|          | 14D-F1711-00-P2 | COVER, SIDE 1             | 1    |  |  |  | UR FOR DRMK  |
|          | 14D-F1711-00-P3 | COVER, SIDE 1             | 1    |  |  |  | UR FOR S3    |
| 4        | 14D-F1721-00-P0 | COVER, SIDE 2             | 1    |  |  |  | UR FOR SMX   |
|          | 14D-F1721-00-P1 | COVER, SIDE 2             | 1    |  |  |  | UR FOR DPBMC |
|          | 14D-F1721-00-P2 | COVER, SIDE 2             | 1    |  |  |  | UR FOR DRMK  |
|          | 14D-F1721-00-P3 | COVER, SIDE 2             | 1    |  |  |  | UR FOR S3    |
| 5        | 90183-05807     | NUT, SPRING               | 4    |  |  |  |              |
| 6        | 90445-08834     | HOSE                      | 2    |  |  |  |              |
| 7        | 90159-06817     | SCREW, WITH WASHER        | 2    |  |  |  |              |
| 8        | 97707-50016     | SCREW, TRUSS HEAD TAPPING | 4    |  |  |  |              |
| 9        | 14D-F173E-00    | GRAPHIC 1                 | 1    |  |  |  | UR FOR SMX   |
|          | 14D-F173E-10    | GRAPHIC 1                 | 1    |  |  |  | UR FOR DPBMC |
|          | 14D-F173E-20    | GRAPHIC 1                 | 1    |  |  |  | UR FOR DRMK  |
|          | 14D-F173E-30    | GRAPHIC 1                 | 1    |  |  |  | UR FOR S3    |
| 10       | 14D-F173F-00    | GRAPHIC 2                 | 1    |  |  |  | UR FOR SMX   |
|          | 14D-F173F-10    | GRAPHIC 2                 | 1    |  |  |  | UR FOR DPBMC |
|          | 14D-F173F-20    | GRAPHIC 2                 | 1    |  |  |  | UR FOR DRMK  |
|          | 14D-F173F-30    | GRAPHIC 2                 | 1    |  |  |  | UR FOR S3    |
| 11       | 14D-F174G-00    | GRAPHIC 3                 | 1    |  |  |  | UR FOR SMX   |
|          | 14D-F174G-10    | GRAPHIC 3                 | 1    |  |  |  | UR FOR DPBMC |
|          | 14D-F174G-20    | GRAPHIC 3                 | 1    |  |  |  | UR FOR DRMK  |
|          | 14D-F174G-30    | GRAPHIC 3                 | 1    |  |  |  | UR FOR S3    |
| 12       | 14D-F174H-00    | GRAPHIC 4                 | 1    |  |  |  | UR FOR SMX   |







14D1460-F190

FIG. 19 STEERING

| REF. NO. | PART NO.     | DESCRIPTION                 | 14D1 |  |  |  | REMARKS |
|----------|--------------|-----------------------------|------|--|--|--|---------|
| 1        | 14D-F3100-00 | FRONT FORK ASSY             | 1    |  |  |  |         |
| 2        | 14D-F3136-00 | .TUBE, OUTER (RIGHT)        | 1    |  |  |  |         |
| 3        | 3AY-F3145-00 | ..OIL SEAL                  | 1    |  |  |  |         |
| 4        | 1T8-F3156-00 | ..CLIP, OIL SEAL            | 1    |  |  |  |         |
| 5        | 14D-F3126-00 | .TUBE, OUTER (LEFT)         | 1    |  |  |  |         |
| 6        | 3AY-F3145-00 | ..OIL SEAL                  | 1    |  |  |  |         |
| 7        | 1T8-F3156-00 | ..CLIP, OIL SEAL            | 1    |  |  |  |         |
| 8        | 5TL-F3110-00 | .INNER TUBE COMP.1          | 2    |  |  |  |         |
| 9        | 5MX-F3170-00 | .CYLINDER COMP., FRONT FORK | 2    |  |  |  |         |
| 10       | 2JG-F3157-00 | .RING, PISTON               | 2    |  |  |  |         |
| 11       | 5LM-F3152-00 | .SPRING, SUB                | 2    |  |  |  |         |
| 12       | 509-F3158-L0 | .GASKET                     | 2    |  |  |  |         |
| 13       | 278-F3181-50 | .BOLT, HEXAGON SOCKET HEAD  | 2    |  |  |  |         |
| 14       | 5LM-F3144-00 | .SEAL, DUST                 | 2    |  |  |  |         |
| 15       | 5TL-F3141-00 | .SPRING, FRONT FORK         | 2    |  |  |  |         |
| 16       | 14D-F3340-00 | ..UNDER BRACKET COMP.       | 1    |  |  |  |         |
| 17       | 18G-23411-00 | ..RACE, BALL 1              | 1    |  |  |  |         |
| 18       | 4D0-F3346-00 | .BOLT 1                     | 4    |  |  |  |         |
| 19       | 5TL-F3111-00 | .BOLT, CAP                  | 2    |  |  |  |         |
| 20       | 2JG-F3147-00 | .O-RING                     | 2    |  |  |  |         |
| 21       | 4D0-F3165-00 | .WASHER, FELT               | 2    |  |  |  |         |
| 22       | 14D-F334G-00 | .BRACKET 1                  | 1    |  |  |  |         |
| 23       | 156-23412-00 | RACE, BALL 2                | 1    |  |  |  |         |
| 24       | 5TL-2341E-00 | RETAINER, BALL BEARING      | 1    |  |  |  |         |
| 25       | 22F-23412-01 | RACE, BALL 2                | 1    |  |  |  |         |
| 26       | 22F-23411-01 | RACE, BALL 1                | 1    |  |  |  |         |
| 27       | 5TL-2341E-10 | RETAINER, BALL BEARING      | 1    |  |  |  |         |







4D11422-F200

FIG. 20 FUEL TANK

| REF. NO. | PART NO.     | DESCRIPTION        | 14D1 |  |  |  | REMARKS |
|----------|--------------|--------------------|------|--|--|--|---------|
| 1        | 14D-F4110-00 | FUEL TANK COMP.    | 1    |  |  |  |         |
| 2        | 14D-F4188-00 | MOLD, FUEL TANK    | 1    |  |  |  |         |
| 3        | 95807-06012  | BOLT, FLANGE       | 2    |  |  |  |         |
| 4        | 14D-F4181-00 | DAMPER, LOCATING 1 | 1    |  |  |  |         |
| 5        | 14D-F4514-00 | NET, FILTER 1      | 1    |  |  |  |         |
| 6        | 14D-F4311-00 | PIPE, FUEL 1       | 1    |  |  |  |         |
| 7        | 14D-F4312-00 | PIPE 2             | 1    |  |  |  |         |
| 8        | 14D-F4313-00 | PIPE 3             | 1    |  |  |  |         |
| 9        | 90467-10008  | CLIP               | 2    |  |  |  |         |
| 10       | 90467-09006  | CLIP               | 2    |  |  |  |         |
| 11       | 90467-08075  | CLIP               | 2    |  |  |  |         |
| 12       | 14D-F4500-00 | FUEL COCK ASSY 1   | 1    |  |  |  |         |
| 13       | 97007-06012  | BOLT               | 2    |  |  |  |         |
| 14       | 92907-06600  | WASHER, PLATE      | 2    |  |  |  |         |
| 15       | 4YY-F4610-00 | CAP ASSY           | 1    |  |  |  |         |
| 16       | 4YY-F4612-00 | GASKET, CAP        | 1    |  |  |  |         |
|          |              |                    |      |  |  |  |         |
|          |              |                    |      |  |  |  |         |
|          |              |                    |      |  |  |  |         |
|          |              |                    |      |  |  |  |         |

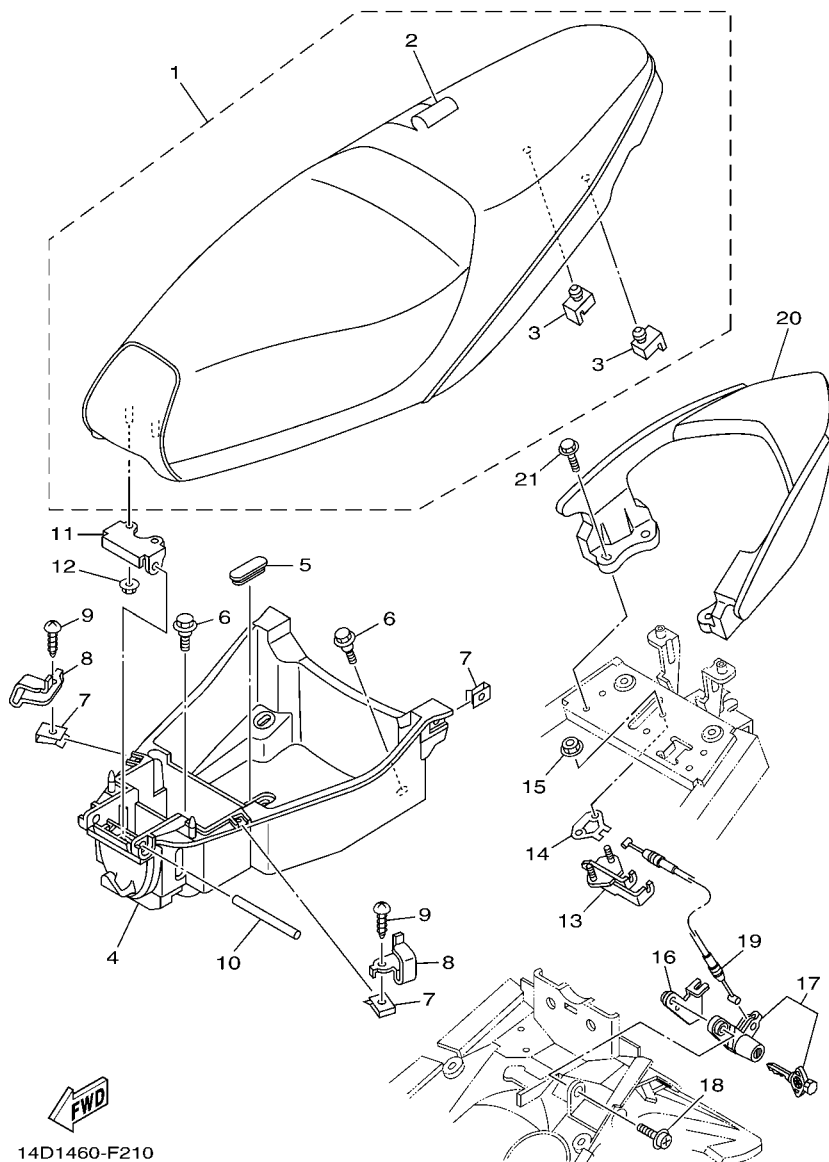
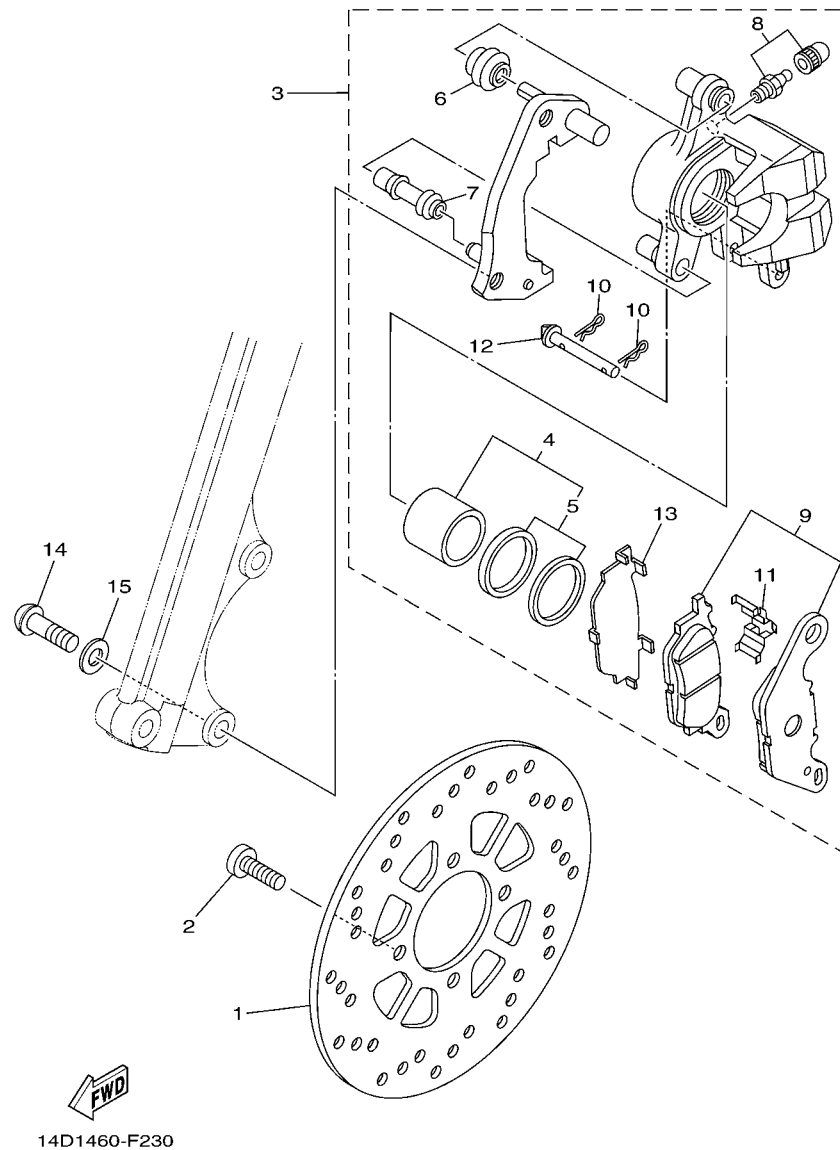


FIG. 21 SEAT

| REF. NO. | PART NO.        | DESCRIPTION               | 14D1 |  |  |  | REMARKS |
|----------|-----------------|---------------------------|------|--|--|--|---------|
| 1        | 14D-F4730-00    | DOUBLE SEAT ASSY          | 1    |  |  |  |         |
| 2        | 14D-F470F-00    | .SEAT COVER COMP.         | 1    |  |  |  |         |
| 3        | 14D-F4741-00    | .PAD, SEAT                | 2    |  |  |  |         |
| 4        | 14D-F473R-00    | BOX 1                     | 1    |  |  |  |         |
| 5        | 5TL-F6199-00    | PLUG, BLIND               | 1    |  |  |  |         |
| 6        | 90109-063F1     | BOLT                      | 4    |  |  |  |         |
| 7        | 90183-05807     | NUT, SPRING               | 4    |  |  |  |         |
| 8        | 14D-F1398-00    | HANGER, HELMET            | 2    |  |  |  |         |
| 9        | 97707-50016     | SCREW, TRUSS HEAD TAPPING | 2    |  |  |  |         |
| 10       | 5TL-F4727-00    | PIN, SEAT FITTING         | 1    |  |  |  |         |
| 11       | 5TL-F4726-00    | HINGE, SEAT               | 1    |  |  |  |         |
| 12       | 95707-06500     | NUT, FLANGE               | 2    |  |  |  |         |
| 13       | 5TL-F4705-00    | SEAT LOCK ASSY            | 1    |  |  |  |         |
| 14       | 5TL-F4792-00    | PLATE                     | 1    |  |  |  |         |
| 15       | 95707-06500     | NUT, FLANGE               | 2    |  |  |  |         |
| 16       | 5TL-F117K-01    | STAY, LOCK                | 1    |  |  |  |         |
| 17       | 5TL-F4799-11    | ROTOR ASSY                | 1    |  |  |  |         |
| 18       | 90159-06033     | SCREW, WITH WASHER        | 1    |  |  |  |         |
| 19       | 5TL-F478E-00    | CABLE, SEAT LOCK          | 1    |  |  |  |         |
| 20       | 14D-F4773-00-35 | HANDLE, SEAT              | 1    |  |  |  | SL      |
| 21       | 95827-06020     | BOLT, FLANGE              | 4    |  |  |  |         |

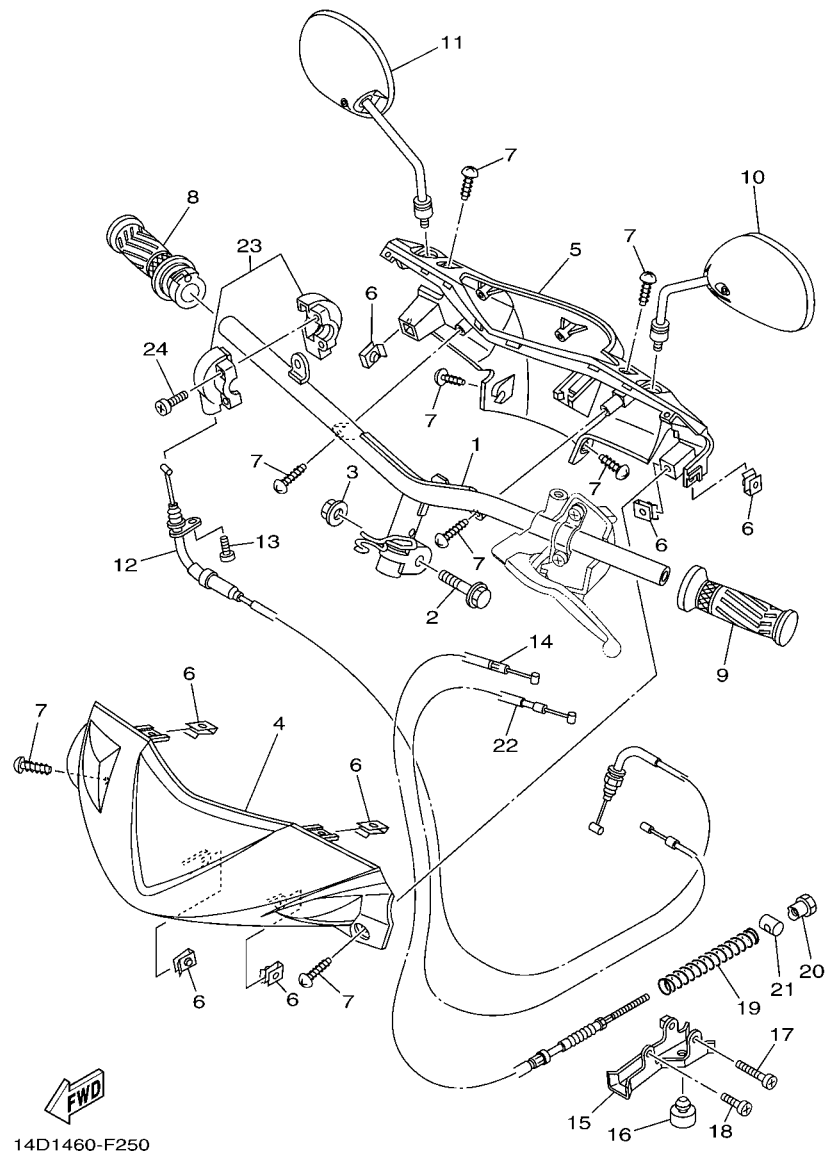
[illegible]



**FIG. 23 FRONT BRAKE CALIPER**

| REF.<br>NO. | PART NO.     | DESCRIPTION             | 14D1 |  |  |  | REMARKS |
|-------------|--------------|-------------------------|------|--|--|--|---------|
| 1           | 5TL-F582U-20 | DISK, BRAKE (RIGHT)     | 1    |  |  |  |         |
| 2           | 90111-08815  | BOLT,HEX. SOCKET BUTTON | 4    |  |  |  |         |
| 3           | 4C9-F580U-00 | CALIPER ASSY (RIGHT)    | 1    |  |  |  |         |
| 4           | 5YP-W0057-00 | .PISTON ASSY, CALIPER   | 1    |  |  |  |         |
| 5           | 5YP-W0047-50 | ..CALIPER SEAL KIT      | 1    |  |  |  |         |
| - 6         | 5YP-F5917-00 | -.BOOT, CALIPER         | 1    |  |  |  |         |
| 7           | 5YP-F5937-00 | .BOOT 2                 | 1    |  |  |  |         |
| 8           | 5YP-W0048-50 | .BLEED SCREW KIT        | 1    |  |  |  |         |
| 9           | 4C9-W0045-00 | .BRAKE PAD KIT          | 1    |  |  |  |         |
| 10          | 5YP-F5925-01 | .CLIP                   | 2    |  |  |  |         |
| - 11        | 5YP-F5919-00 | -.SUPPORT, PAD          | 1    |  |  |  |         |
| 12          | 5YP-F5924-00 | .PIN, PAD               | 1    |  |  |  |         |
| 13          | 5YP-F5939-00 | .SUPPORT, PAD 2         | 1    |  |  |  |         |
| 14          | 90149-10801  | SCREW                   | 2    |  |  |  |         |
| 15          | 92903-10200  | WASHER, PLAIN           | 2    |  |  |  |         |
| - - - - -   |              |                         |      |  |  |  |         |
| - - - - -   |              |                         |      |  |  |  |         |
| - - - - -   |              |                         |      |  |  |  |         |

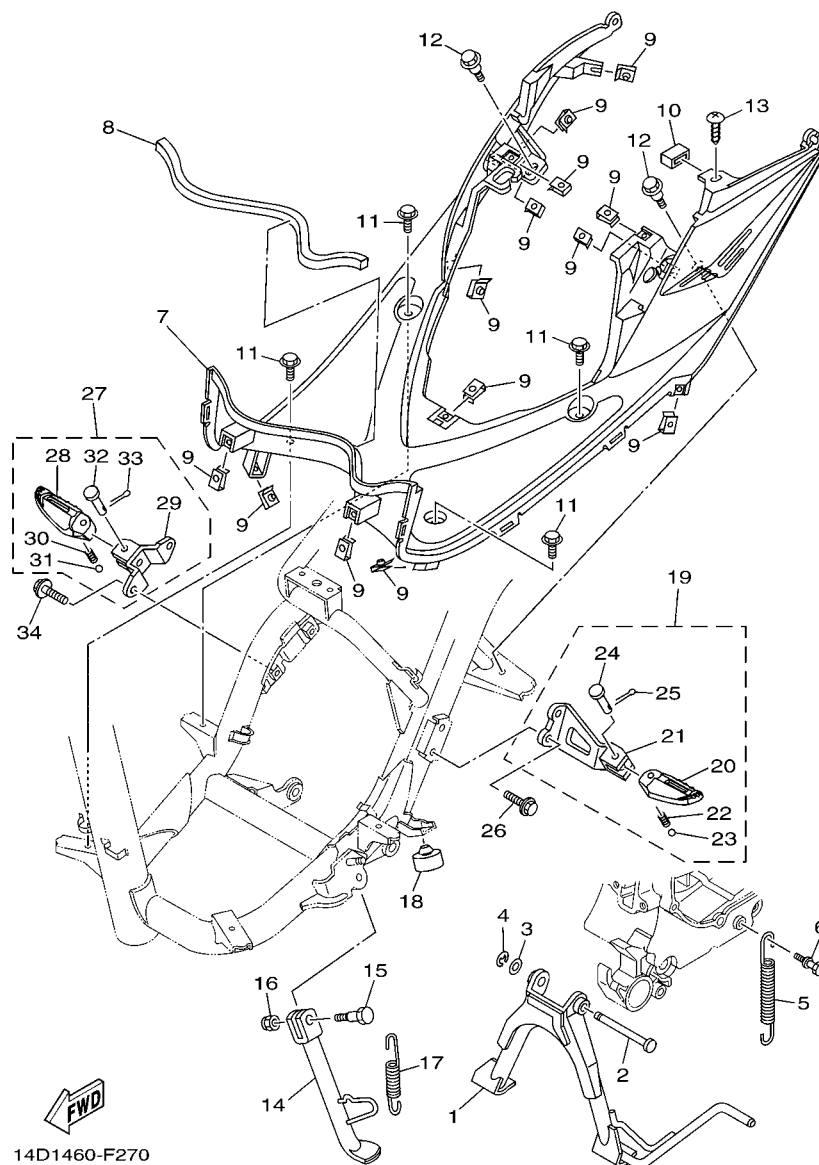




**FIG. 25 STEERING HANDLE & CABLE**

| REF. NO. | PART NO.        | DESCRIPTION                   | 14D1 |  |  |  | REMARKS      |
|----------|-----------------|-------------------------------|------|--|--|--|--------------|
| 1        | 14D-F6110-01    | HANDLE COMP.                  | 1    |  |  |  |              |
| 2        | 90105-10036     | BOLT, FLANGE                  | 1    |  |  |  |              |
| 3        | 90185-10808     | NUT, SELF-LOCKING             | 1    |  |  |  |              |
| 4        | 14D-F6143-00-P0 | COVER, HANDLEBAR UPPER 1      | 1    |  |  |  | UR FOR SMX   |
|          | 14D-F6143-00-P1 | COVER, HANDLEBAR UPPER 1      | 1    |  |  |  | UR FOR DPBMC |
|          | 14D-F6143-00-P2 | COVER, HANDLEBAR UPPER 1      | 1    |  |  |  | UR FOR DRMK  |
|          | 14D-F6143-00-P3 | COVER, HANDLEBAR UPPER 1      | 1    |  |  |  | UR FOR S3    |
| 5        | 14D-F6145-00    | COVER, HANDLEBAR UPPER 2      | 1    |  |  |  |              |
| 6        | 90183-05807     | NUT, SPRING                   | 7    |  |  |  |              |
| 7        | 97707-50016     | SCREW, TRUSS HEAD TAPPING     | 8    |  |  |  |              |
| 8        | 5TL-F6240-00    | GRIP ASSY                     | 1    |  |  |  |              |
| 9        | 5TL-F6241-00    | GRIP                          | 1    |  |  |  |              |
| 10       | 2P2-F6280-00    | REAR VIEW MIRROR ASSY (LEFT)  | 1    |  |  |  |              |
| 11       | 2P2-F6290-00    | REAR VIEW MIRROR ASSY (RIGHT) | 1    |  |  |  |              |
| 12       | 14D-F6311-00    | CABLE, THROTTLE 1             | 1    |  |  |  |              |
| 13       | 98507-05016     | SCREW, PAN HEAD               | 1    |  |  |  |              |
| 14       | 14D-F6351-00    | CABLE, BRAKE                  | 1    |  |  |  |              |
| 15       | 5MX-F637G-00    | HOLDER, WIRE                  | 1    |  |  |  |              |
| 16       | 4YY-F7114-00    | STOPPER, MAIN STAND           | 1    |  |  |  |              |
| 17       | 98507-06040     | SCREW, PAN HEAD               | 1    |  |  |  |              |
| 18       | 98507-06014     | SCREW, PAN HEAD               | 1    |  |  |  |              |
| 19       | 90501-16003     | SPRING, COMPRESSION           | 1    |  |  |  |              |
| 20       | 90175-06013     | NUT, WING                     | 1    |  |  |  |              |
| 21       | 90249-12008     | PIN                           | 1    |  |  |  |              |
| 22       | 14D-F6331-00    | CABLE, STARTER 1              | 1    |  |  |  |              |
| 23       | 5TL-F6270-00    | CAP GRIP ASSY                 | 1    |  |  |  |              |
| 24       | 98507-05025     | SCREW, PAN HEAD               | 2    |  |  |  |              |

[illegible]

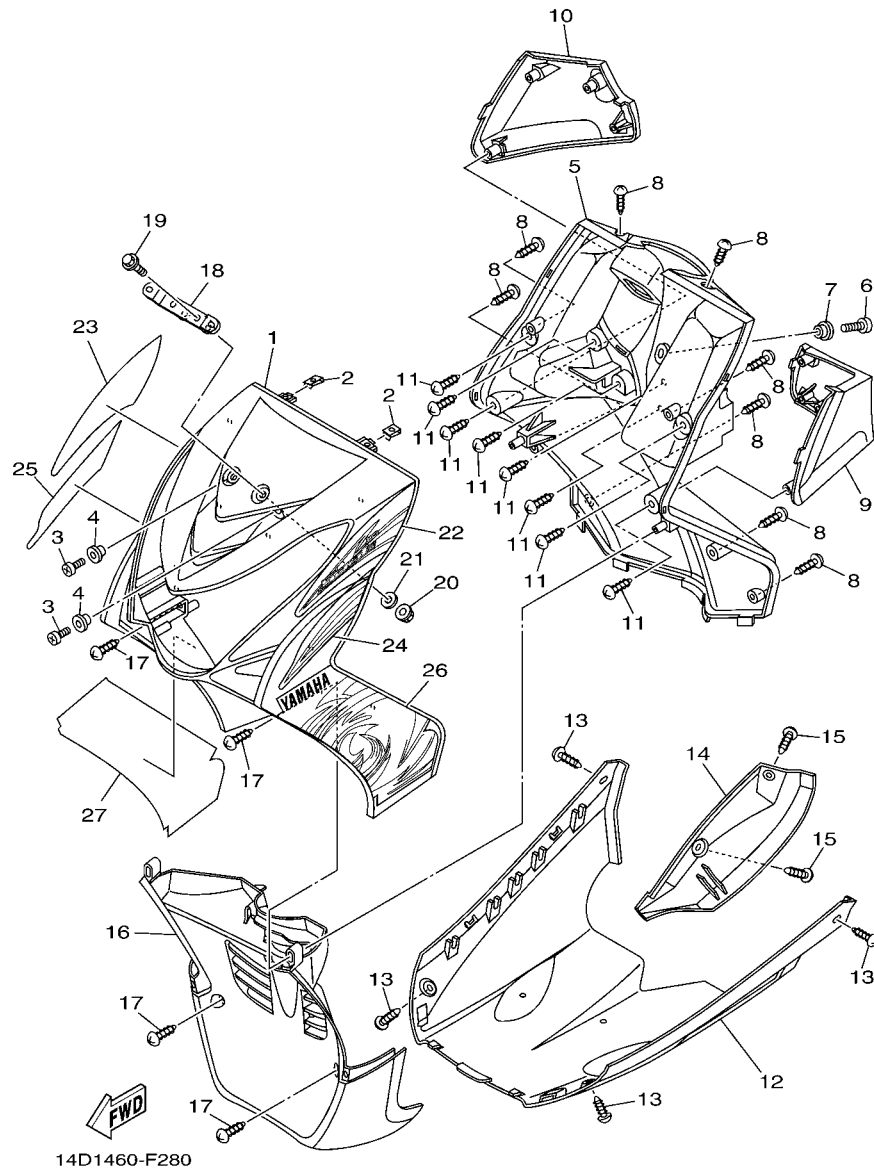


**FIG. 27 STAND & FOOTREST**

| REF. NO. | PART NO.        | DESCRIPTION               | 14D1 |  |  |  | REMARKS |
|----------|-----------------|---------------------------|------|--|--|--|---------|
| 1        | 5TL-F7111-00-33 | STAND, MAIN               | 1    |  |  |  | YB      |
| 2        | 90249-10002     | PIN                       | 1    |  |  |  |         |
| 3        | 90201-10119     | WASHER, PLATE             | 1    |  |  |  |         |
| 4        | 99001-08600     | CIRCLIP                   | 1    |  |  |  |         |
| 5        | 90506-35002     | SPRING, TENSION           | 1    |  |  |  |         |
| 6        | 5LW-F7254-00    | HOOK                      | 1    |  |  |  |         |
| 7        | 14D-F7481-00    | BOARD, FOOTREST           | 1    |  |  |  |         |
| 8        | 14D-F8415-00    | DAMPER 1                  | 1    |  |  |  |         |
| 9        | 90183-05807     | NUT, SPRING               | 13   |  |  |  |         |
| 10       | 14D-F7414-00    | DAMPER, FOOTREST          | 1    |  |  |  |         |
| 11       | 90119-06044     | BOLT, WITH WASHER         | 4    |  |  |  | YB      |
| 12       | 90109-063F1     | BOLT                      | 2    |  |  |  |         |
| 13       | 97707-50016     | SCREW, TRUSS HEAD TAPPING | 1    |  |  |  |         |
| 14       | 5TL-F7311-00-33 | STAND, SIDE               | 1    |  |  |  |         |
| 15       | 90109-08881     | BOLT                      | 1    |  |  |  |         |
| 16       | 90185-08803     | NUT, SELF-LOCKING         | 1    |  |  |  |         |
| 17       | 90506-20514     | SPRING, TENSION           | 1    |  |  |  |         |
| 18       | 4YY-F7114-00    | STOPPER, MAIN STAND       | 1    |  |  |  |         |
| 19       | 14D-F7430-00    | REAR FOOTREST ASSY 1      | 1    |  |  |  |         |
| 20       | 14D-F7431-00    | .FOOTREST, REAR 1         | 1    |  |  |  |         |
| 21       | 14D-F7432-00    | .BRACKET 1                | 1    |  |  |  |         |
| 22       | 90501-12743     | .SPRING, COMPRESSION      | 1    |  |  |  |         |
| 23       | 93501-04830     | .BALL                     | 1    |  |  |  |         |
| 24       | 91701-08035     | .PIN, CLEVIS              | 1    |  |  |  |         |
| 25       | 91401-25015     | .PIN, COTTER              | 1    |  |  |  |         |
| 26       | 95807-08016     | BOLT, FLANGE              | 2    |  |  |  |         |
| 27       | 14D-F7440-00    | REAR FOOTREST ASSY 2      | 1    |  |  |  |         |

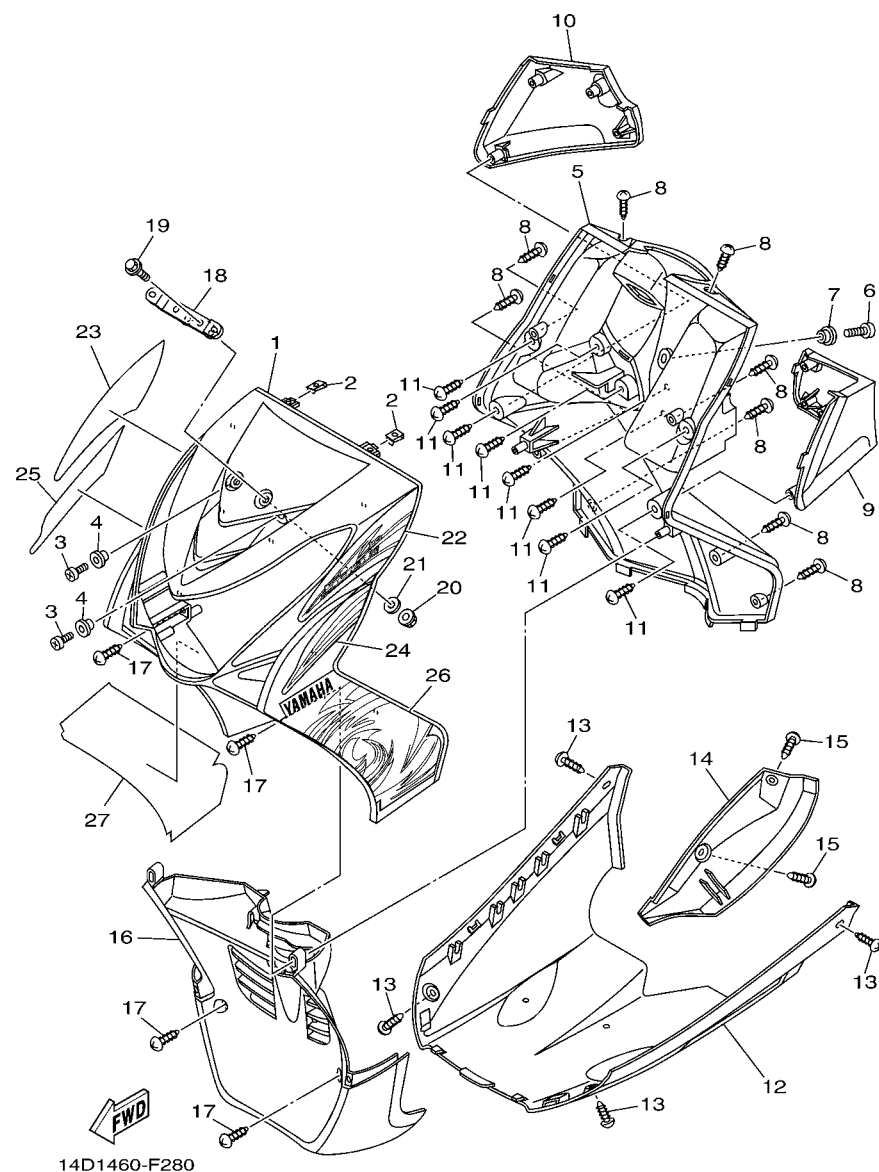






**FIG. 28 LEG SHIELD**

| REF. NO. | PART NO.        | DESCRIPTION               | 14D1 |  |  |  | REMARKS      |
|----------|-----------------|---------------------------|------|--|--|--|--------------|
| 1        | 14D-F8311-00-P0 | LEG SHIELD 1              | 1    |  |  |  | UR FOR SMX   |
|          | 14D-F8311-00-P1 | LEG SHIELD 1              | 1    |  |  |  | UR FOR DPBMC |
|          | 14D-F8311-00-P2 | LEG SHIELD 1              | 1    |  |  |  | UR FOR DRMK  |
|          | 14D-F8311-00-P3 | LEG SHIELD 1              | 1    |  |  |  | UR FOR S3    |
| 2        | 90183-05807     | NUT, SPRING               | 2    |  |  |  |              |
| 3        | 9890L-06012     | SCREW, BIND               | 2    |  |  |  |              |
| 4        | 90387-07811     | COLLAR                    | 2    |  |  |  |              |
| 5        | 14D-F8312-00    | LEG SHIELD 2              | 1    |  |  |  |              |
| 6        | 9890L-06012     | SCREW, BIND               | 1    |  |  |  |              |
| 7        | 90387-07811     | COLLAR                    | 1    |  |  |  |              |
| 8        | 97707-50016     | SCREW, TRUSS HEAD TAPPING | 8    |  |  |  |              |
| 9        | 14D-F836K-00    | PANEL, INNER 1            | 1    |  |  |  |              |
| 10       | 14D-F836L-00    | PANEL, INNER 2            | 1    |  |  |  |              |
| 11       | 97707-50016     | SCREW, TRUSS HEAD TAPPING | 8    |  |  |  |              |
| 12       | 14D-F8385-00    | COVER, LOWER              | 1    |  |  |  |              |
| 13       | 97707-50016     | SCREW, TRUSS HEAD TAPPING | 4    |  |  |  |              |
| 14       | 14D-F8395-00    | COVER, UNDER              | 1    |  |  |  |              |
| 15       | 97707-50016     | SCREW, TRUSS HEAD TAPPING | 2    |  |  |  |              |
| 16       | 14D-F1552-00    | FENDER, INNER             | 1    |  |  |  |              |
| 17       | 97707-50016     | SCREW, TRUSS HEAD TAPPING | 4    |  |  |  |              |
| 18       | 14D-H454E-00    | BRACKET, NUMBER PLATE     | 1    |  |  |  |              |
| 19       | 95807-06030     | BOLT, FLANGE              | 2    |  |  |  |              |
| 20       | 95707-06500     | NUT, FLANGE               | 2    |  |  |  |              |
| 21       | 90201-06057     | WASHER, PLATE             | 2    |  |  |  |              |
| 22       | 14D-F832L-00    | GRAPHIC 13                | 1    |  |  |  | UR FOR SMX   |
|          | 14D-F832L-10    | GRAPHIC 13                | 1    |  |  |  | UR FOR DPBMC |
|          | 14D-F832L-20    | GRAPHIC 13                | 1    |  |  |  | UR FOR DRMK  |



**FIG. 28 LEG SHIELD**

| REF. NO. | PART NO.     | DESCRIPTION | 14D1 |  |  |  | REMARKS      |
|----------|--------------|-------------|------|--|--|--|--------------|
| 22       | 14D-F832L-30 | GRAPHIC 13  | 1    |  |  |  | UR FOR S3    |
| 23       | 14D-F831Y-00 | GRAPHIC 14  | 1    |  |  |  | UR FOR SMX   |
|          | 14D-F831Y-10 | GRAPHIC 14  | 1    |  |  |  | UR FOR DPBMC |
|          | 14D-F831Y-20 | GRAPHIC 14  | 1    |  |  |  | UR FOR DRMK  |
|          | 14D-F831Y-30 | GRAPHIC 14  | 1    |  |  |  | UR FOR S3    |
| 24       | 14D-F832B-00 | GRAPHIC15   | 1    |  |  |  | UR FOR SMX   |
|          | 14D-F832B-10 | GRAPHIC15   | 1    |  |  |  | UR FOR DPBMC |
|          | 14D-F832B-20 | GRAPHIC15   | 1    |  |  |  | UR FOR DRMK  |
|          | 14D-F832B-30 | GRAPHIC15   | 1    |  |  |  | UR FOR S3    |
| 25       | 14D-F832C-00 | GRAPHIC 16  | 1    |  |  |  | UR FOR SMX   |
|          | 14D-F832C-10 | GRAPHIC 16  | 1    |  |  |  | UR FOR DPBMC |
|          | 14D-F832C-20 | GRAPHIC 16  | 1    |  |  |  | UR FOR DRMK  |
|          | 14D-F832C-30 | GRAPHIC 16  | 1    |  |  |  | UR FOR S3    |
| 26       | 14D-F832D-00 | GRAPHIC 17  | 1    |  |  |  | UR FOR SMX   |
|          | 14D-F832D-10 | GRAPHIC 17  | 1    |  |  |  | UR FOR DPBMC |
|          | 14D-F832D-20 | GRAPHIC 17  | 1    |  |  |  | UR FOR DRMK  |
|          | 14D-F832D-30 | GRAPHIC 17  | 1    |  |  |  | UR FOR S3    |
| 27       | 14D-F832P-00 | GRAPHIC 18  | 1    |  |  |  | UR FOR SMX   |
|          | 14D-F832P-10 | GRAPHIC 18  | 1    |  |  |  | UR FOR DPBMC |
|          | 14D-F832P-20 | GRAPHIC 18  | 1    |  |  |  | UR FOR DRMK  |
|          | 14D-F832P-30 | GRAPHIC 18  | 1    |  |  |  | UR FOR S3    |
|          |              |             |      |  |  |  |              |
|          |              |             |      |  |  |  |              |

[illegible]

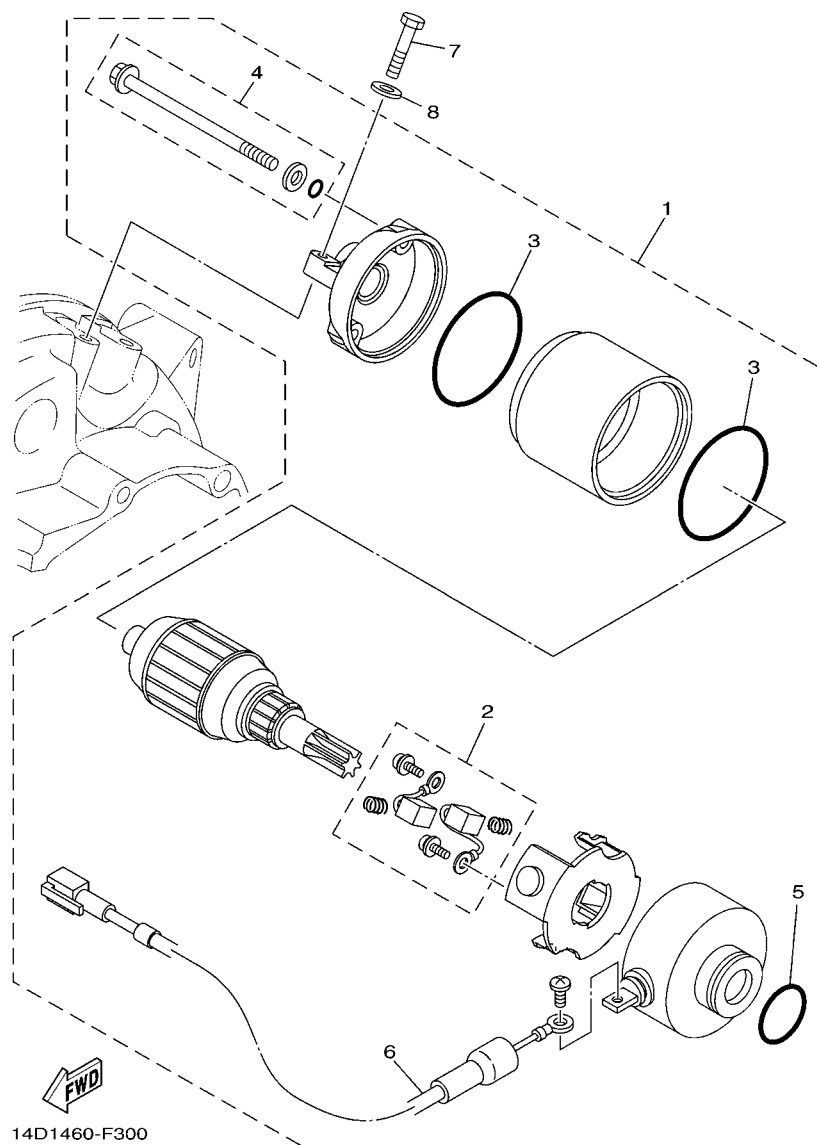
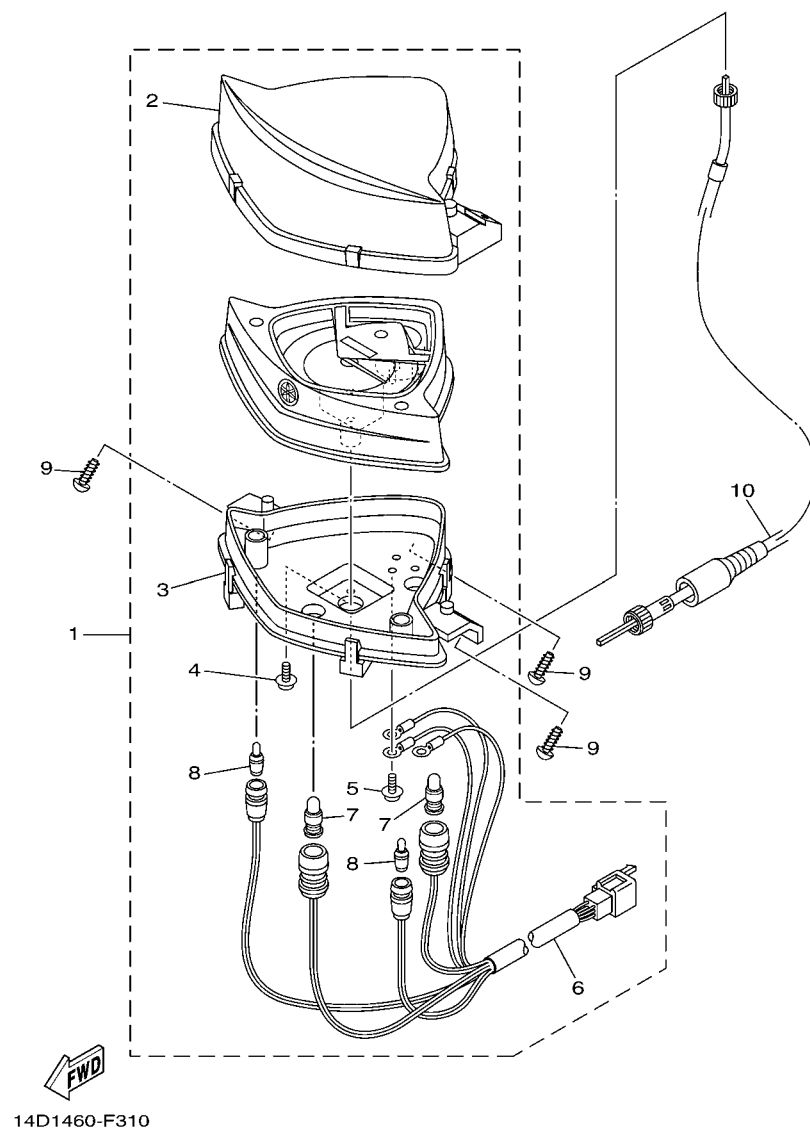


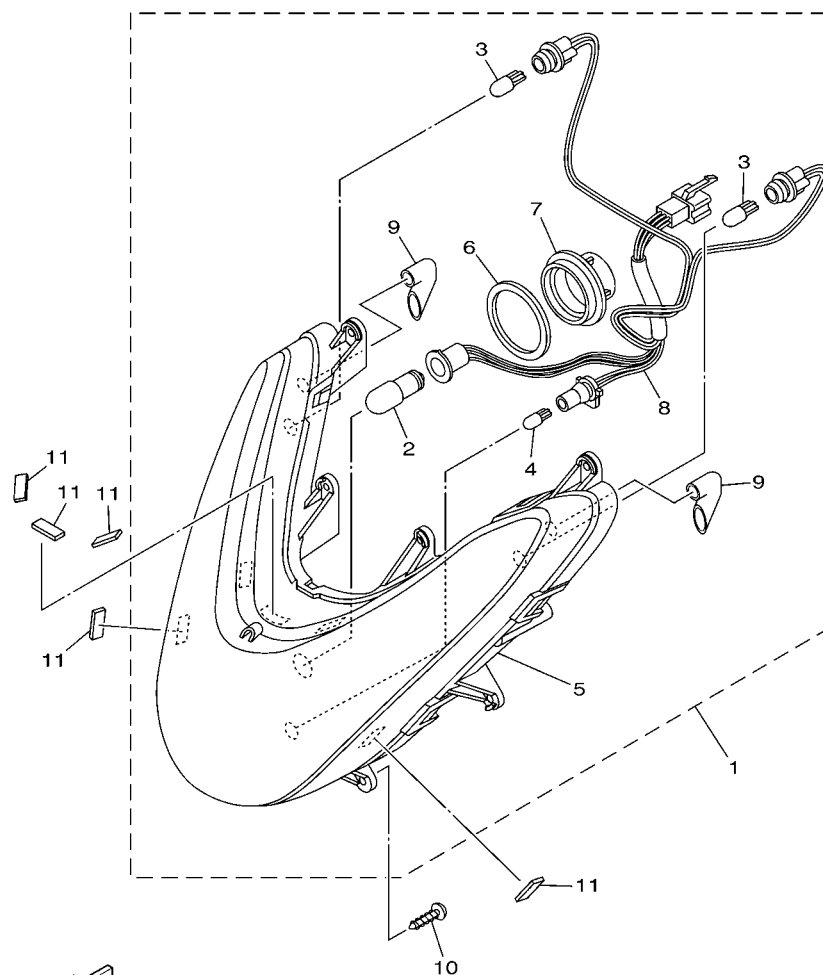
FIG. 30 STARTING MOTOR

[illegible]

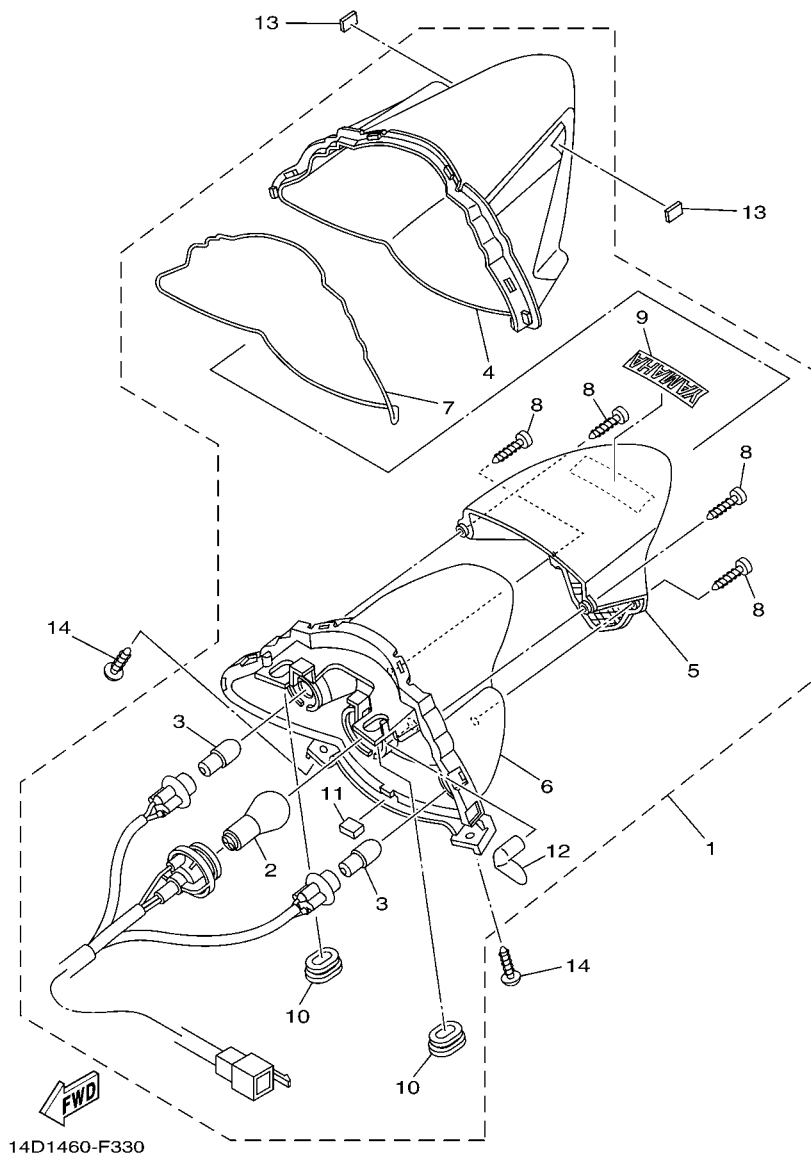


**FIG. 31 METER**

[illegible]



**FIG. 32 HEADLIGHT**



**FIG. 33 TAILLIGHT**

| REF. NO. | PART NO.     | DESCRIPTION               | 14D1 |  |  |  | REMARKS |
|----------|--------------|---------------------------|------|--|--|--|---------|
| 1        | 14D-H4710-00 | TAILLIGHT UNIT ASSY       | 1    |  |  |  | AMBER   |
| 2        | 4AC-H4714-00 | .BULB (12V-21/5W)         | 1    |  |  |  |         |
| 3        | 5HV-H3311-00 | .BULB, FLASHER (12V-10W)  | 2    |  |  |  |         |
| 4        | 14D-H4743-00 | .LENS, LICENCE LIGHT      | 1    |  |  |  |         |
| 5        | 14D-H4721-00 | .LENS, TAILLIGHT          | 1    |  |  |  |         |
| 6        | 14D-H4711-00 | .BASE, TAILLIGHT          | 1    |  |  |  |         |
| 7        | 14D-H4723-00 | .GASKET, TAIL LENS        | 1    |  |  |  |         |
| 8        | 97707-40612  | .SCREW, TAPPING           | 4    |  |  |  |         |
| 9        | 3S0-F153E-20 | .EMBLEM, YAMAHA           | 1    |  |  |  |         |
| 10       | 90480-01868  | .GROMMET                  | 2    |  |  |  |         |
| 11       | 14D-F386J-00 | .CUSHION                  | 1    |  |  |  |         |
| 12       | 14D-H3535-00 | .TUBE                     | 1    |  |  |  |         |
| 13       | 14D-F8371-00 | DAMPER                    | 2    |  |  |  |         |
| 14       | 97707-50016  | SCREW, TRUSS HEAD TAPPING | 2    |  |  |  |         |
|          |              |                           |      |  |  |  |         |
|          |              |                           |      |  |  |  |         |
|          |              |                           |      |  |  |  |         |
|          |              |                           |      |  |  |  |         |





| REF. NO. | PART NO.     | DESCRIPTION               | 14D1 |  |  |  | REMARKS |
|----------|--------------|---------------------------|------|--|--|--|---------|
| 1        | 14D-H3973-00 | SWITCH, HANDLE 3          | 1    |  |  |  |         |
| 2        | 5TL-H3941-10 | .LEVER, STARTER           | 1    |  |  |  |         |
| 3        | 5TL-H3947-10 | .SPRING                   | 1    |  |  |  |         |
| 4        | 5TL-H397X-10 | .SPACER                   | 1    |  |  |  |         |
| 5        | 9850L-06008  | .SCREW, PAN HEAD          | 1    |  |  |  |         |
| 6        | 5TL-H3955-20 | BRACKET 1                 | 1    |  |  |  |         |
| 7        | 98507-05016  | SCREW, PAN HEAD           | 2    |  |  |  |         |
| 8        | 92907-05600  | WASHER, PLATE             | 2    |  |  |  |         |
| 9        | 97707-50016  | SCREW, TRUSS HEAD TAPPING | 1    |  |  |  |         |
| 10       | 5TL-H3975-31 | SWITCH, HANDLE 2          | 1    |  |  |  |         |
| 11       | 97707-50016  | SCREW, TRUSS HEAD TAPPING | 1    |  |  |  |         |
| 12       | 5TL-H2911-20 | HOLDER, LEVER 1           | 1    |  |  |  |         |
| 13       | 5TL-H3912-20 | LEVER 1                   | 1    |  |  |  |         |
| 14       | 90109-06814  | BOLT                      | 1    |  |  |  |         |
| 15       | 95607-06100  | NUT, U                    | 1    |  |  |  |         |
| 16       | 5TL-H3980-10 | FRONT STOP SWITCH ASSY    | 1    |  |  |  |         |
| 17       | 9870M-03008  | SCREW, FLAT HEAD          | 1    |  |  |  |         |
| 18       | 91317-06020  | BOLT                      | 1    |  |  |  |         |
| 19       | 5TL-H3922-00 | LEVER 2                   | 1    |  |  |  |         |
| 20       | 90109-06577  | BOLT                      | 1    |  |  |  |         |
| 21       | 95607-06100  | NUT, U                    | 1    |  |  |  |         |
| 22       | 5TL-H3980-20 | FRONT STOP SWITCH ASSY    | 1    |  |  |  |         |
|          |              |                           |      |  |  |  |         |

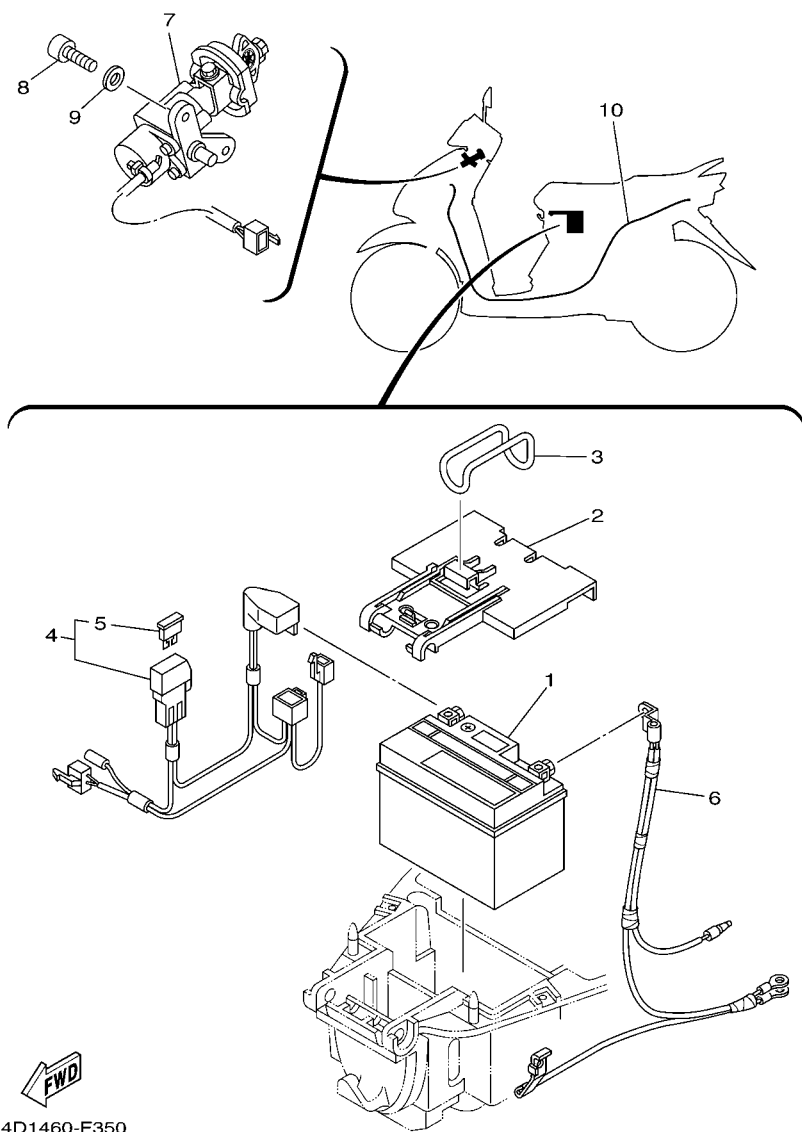


FIG. 35 ELECTRICAL 1

[illegible]



NUMERICAL INDEX

| PART NO.     | REF. NO. | PART NO.     | REF. NO. | PART NO.     | REF. NO. | PART NO.     | REF. NO. | PART NO.        | REF. NO. | PART NO.     | REF. NO. |
|--------------|----------|--------------|----------|--------------|----------|--------------|----------|-----------------|----------|--------------|----------|
| 5LW-11133-10 | 1 - 2    | 5MX-E1605-00 | 2 - 15   | 4D0-E3585-00 | 7 - 1    | 5TL-E4948-02 | 8 - 12   | 5TL-E7410-10    | 14 - 1   | 14D-F173F-30 | 17 - 10  |
| 5LW-11134-10 | 1 - 3    | 5MX-E1607-00 | 2 - 15   | 5MX-E3595-10 | 7 - 2    | 5TL-E4984-00 | 8 - 21   | 5TL-E7421-10    | 14 - 6   | 14D-F174G-00 | 17 - 11  |
| 33M-12117-01 | 3 - 7    | 5MX-E1631-00 | 2 - 12   | 5LW-E3769-00 | 10 - 33  | 5TL-E4985-00 | 8 - 18   | 5TL-E7465-00    | 13 - 27  | 14D-F174G-10 | 17 - 11  |
| 22F-12151-10 | 3 - 8    | 5MX-E1633-10 | 2 - 13   | 4D0-E4133-00 | 8 - 4    | 14D-E4987-00 | 1 - 27   | 5TL-E7465-10    | 13 - 28  | 14D-F174G-20 | 17 - 11  |
| 22F-12159-00 | 3 - 9    | 5MX-E1636-00 | 2 - 12   | 5TL-E4133-00 | 8 - 34   | 5TL-E4D25-00 | 8 - 8    | 5TL-E7611-00    | 13 - 18  | 14D-F174G-30 | 17 - 11  |
| 5LW-12231-00 | 4 - 7    | 5MX-E1638-00 | 2 - 12   | 4D0-E414G-00 | 8 - 10   | 5LW-E5113-00 | 10 - 31  | 5LW-E7620-00    | 13 - 10  | 14D-F174H-00 | 17 - 12  |
| 5LW-12241-00 | 4 - 8    | 5MX-E1651-01 | 2 - 5    | 5TL-E4170-00 | 8 - 27   | 5TL-E5150-10 | 10 - 1   | 5TL-E7623-00    | 13 - 13  | 14D-F174H-10 | 17 - 12  |
| 663-14159-00 | 8 - 17   | 5MX-E1681-10 | 2 - 3    | 5TL-E4171-00 | 8 - 33   | 14D-E5191-00 | 11 - 9   | 5TL-E7641-01    | 13 - 17  | 14D-F174H-20 | 17 - 12  |
| 4JH-14160-00 | 8 - 14   | 14D-E2111-00 | 3 - 1    | 4D0-E4173-00 | 8 - 31   | 14D-E5315-00 | 11 - 23  | 5TL-E7660-00    | 13 - 25  | 14D-F174H-30 | 17 - 12  |
| 3TJ-14536-40 | 8 - 28   | 5MX-E2113-00 | 3 - 5    | 5TL-E4174-00 | 8 - 32   | 14D-E5316-00 | 11 - 30  | 5TL-E7664-00    | 13 - 29  | 14D-F174J-00 | 17 - 13  |
| 676-14548-00 | 8 - 19   | 5MX-E2116-00 | 3 - 4    | 5TL-E4191-00 | 8 - 23   | 14D-E5333-00 | 11 - 17  | 5TL-E7668-00    | 13 - 32  | 14D-F174J-10 | 17 - 13  |
| 4TV-14557-00 | 8 - 25   | 5TL-E2118-00 | 3 - 6    | 5TL-E4196-00 | 8 - 35   | 5LW-E5351-00 | 5 - 4    | 5TL-E7670-00    | 13 - 26  | 14D-F174J-20 | 17 - 13  |
| 3TJ-14562-40 | 8 - 16   | 5MX-E2119-00 | 3 - 3    | 5TL-E4275-00 | 8 - 29   | 5TL-E5362-00 | 10 - 32  | 5TL-E7683-00    | 13 - 30  | 14D-F174J-30 | 17 - 13  |
| 3TJ-14564-40 | 8 - 6    | 5LW-E2121-00 | 3 - 2    | 5TL-E4280-00 | 8 - 30   | 5LW-E5363-00 | 10 - 24  | 5TL-E7684-00    | 13 - 31  | 14D-F174K-00 | 17 - 14  |
| 688-14592-00 | 8 - 20   | 4ST-E2156-00 | 3 - 11   | 4D0-E4357-00 | 8 - 38   | 5TL-E5371-00 | 10 - 5   | 14D-F1110-00    | 15 - 1   | 14D-F174K-10 | 17 - 14  |
| 42H-14714-10 | 9 - 22   | 4CW-E2157-00 | 4 - 15   | 14D-E4411-00 | 7 - 7    | 5LW-E5371-01 | 11 - 5   | 14D-F1161-00    | 19 - 33  | 14D-F174K-20 | 17 - 14  |
| 5BF-14919-00 | 8 - 36   | 5LW-E2170-10 | 4 - 1    | 14D-E4412-00 | 7 - 8    | 5TL-E5373-00 | 10 - 6   | 14D-F117K-01    | 21 - 16  | 14D-F174K-30 | 17 - 14  |
| 3TJ-14952-40 | 8 - 15   | 5MX-E2176-00 | 4 - 3    | 14D-E4416-00 | 8 - 3    | 14D-E5407-00 | 11 - 16  | 14D-F1278-00    | 15 - 2   | 5TL-F2123-00 | 10 - 4   |
| 5LW-15521-00 | 12 - 6   | 5MX-E2210-10 | 4 - 9    | 14D-E4417-00 | 7 - 18   | 14D-E5411-00 | 11 - 1   | 14D-F1398-00    | 21 - 8   | 14D-F2210-01 | 18 - 1   |
| 5LW-15659-01 | 11 - 8   | 5MX-E2213-00 | 4 - 10   | 14D-E4437-00 | 7 - 15   | 14D-E5413-00 | 11 - 28  | 5TL-F1410-00    | 15 - 3   | 14D-F3100-00 | 19 - 1   |
| 4VP-17632-00 | 13 - 12  | 5VV-E2231-00 | 4 - 7    | 4ST-E443E-00 | 11 - 6   | 5LW-E5417-00 | 10 - 12  | 5TL-F1459-00    | 15 - 10  | 5TL-F3110-00 | 19 - 8   |
| 5LW-17653-00 | 13 - 14  | 5MX-E2241-00 | 4 - 8    | 5TL-E443E-00 | 7 - 12   | 14D-E5421-00 | 10 - 26  | 14D-F1511-00-P0 | 16 - 1   | 5TL-F3111-00 | 19 - 19  |
| 164-22216-00 | 10 - 3   | 5LW-E2611-00 | 6 - 18   | 5TL-E4452-00 | 7 - 11   | 5LW-E5451-00 | 11 - 2   | 14D-F1511-00-P1 | 16 - 1   | 14D-F3126-00 | 19 - 5   |
| 18G-23411-00 | 19 - 17  | 5TL-E2631-10 | 6 - 21   | 5TL-E4453-00 | 7 - 10   | 5LW-E5453-00 | 10 - 15  | 14D-F1511-00-P2 | 16 - 1   | 14D-F3136-00 | 19 - 2   |
| 22F-23411-01 | 19 - 26  | 5TL-E2633-00 | 6 - 23   | 5TL-E4462-00 | 7 - 17   | 14D-E5461-00 | 10 - 27  | 14D-F1511-00-P3 | 16 - 1   | 5TL-F3141-00 | 19 - 15  |
| 156-23412-00 | 19 - 23  | 5LW-E2651-00 | 6 - 1    | 14D-E4467-00 | 7 - 16   | 14D-E5471-00 | 11 - 33  | 3S0-F153E-20    | 33 - 9   | 5LM-F3144-00 | 19 - 14  |
| 22F-23412-01 | 19 - 25  | 5LW-E2652-00 | 6 - 3    | 5TL-E4531-00 | 8 - 26   | 14D-E5472-00 | 11 - 18  | 14D-F1552-00    | 28 - 16  | 3AY-F3145-00 | 19 - 3   |
| 5TL-2341E-00 | 19 - 24  | 14D-E2653-00 | 6 - 5    | 14D-E4610-00 | 9 - 1    | 14D-E5473-00 | 11 - 31  | 14D-F1611-00    | 16 - 4   |              | 19 - 6   |
| 5TL-2341E-10 | 19 - 27  | 5LW-E2658-00 | 6 - 2    | 14D-E4613-00 | 9 - 18   | 5TL-E5475-00 | 11 - 21  | 14D-F1621-00    | 16 - 9   | 2JG-F3147-00 | 19 - 20  |
| 36Y-2589H-00 | 26 - 8   | 5LW-E2659-02 | 6 - 7    | 14D-E4718-00 | 9 - 2    | 14D-E5477-00 | 11 - 34  | 14D-F163A-00    | 16 - 10  | 5LM-F3152-00 | 19 - 11  |
| 1Y7-83517-00 | 31 - 7   | 5LW-E2668-02 | 6 - 8    | 14D-E4728-00 | 9 - 3    | 14D-E5481-00 | 11 - 29  | 14D-F163E-00    | 16 - 11  | 1T8-F3156-00 | 19 - 4   |
| 14D-E1102-00 | 1 - 1    | 5TL-E2669-00 | 6 - 9    | 14D-E4738-00 | 9 - 4    | 14D-E5484-00 | 11 - 32  | 14D-F1691-00    | 7 - 26   |              | 19 - 7   |
| 5TL-E1102-10 | 1 - 1    | 5TL-E2681-10 | 6 - 22   | 5TL-E4747-00 | 9 - 15   | 14D-E5492-00 | 11 - 22  | 14D-F1711-00-P0 | 17 - 3   | 2JG-F3157-00 | 19 - 10  |
| 5LW-E111F-00 | 4 - 12   | 5TL-E2682-00 | 6 - 4    | 5TL-E4770-00 | 9 - 9    | 5TL-E5494-00 | 11 - 24  | 14D-F1711-00-P1 | 17 - 3   | 509-F3158-L0 | 19 - 12  |
| 5MX-E1145-00 | 4 - 4    | 5LW-E3185-00 | 1 - 11   | 5TL-E479M-10 | 9 - 16   | 14D-E5497-00 | 11 - 20  | 14D-F1711-00-P2 | 17 - 3   | 4D0-F3165-00 | 19 - 21  |
| 5LW-E1155-00 | 1 - 12   | 5MX-E3300-00 | 5 - 1    | 14D-E4803-00 | 9 - 28   | 5TL-E5524-00 | 12 - 1   | 14D-F1711-00-P3 | 17 - 3   | 5MX-F3170-00 | 19 - 9   |
| 5LW-E1165-00 | 1 - 10   | 5TL-E3324-00 | 2 - 10   | 5TL-E4871-00 | 1 - 8    | 5LW-E5532-00 | 12 - 8   | 14D-F1721-00-P0 | 17 - 4   | 278-F3181-50 | 19 - 13  |
| 5LW-E1181-00 | 1 - 21   | 5LW-E3411-00 | 5 - 5    | 5TL-E4872-00 | 9 - 23   | 5VV-E5570-10 | 12 - 4   | 14D-F1721-00-P1 | 17 - 4   | 14D-F3340-00 | 19 - 16  |
| 5LW-E1185-00 | 1 - 9    | 5LW-E3416-00 | 10 - 20  | 14D-E4881-00 | 9 - 24   | 5TL-E5601-10 | 12 - 10  | 14D-F1721-00-P2 | 17 - 4   | 4D0-F3346-00 | 19 - 18  |
| 4ST-E1186-00 | 1 - 15   | 5LW-E3452-00 | 2 - 7    | 14D-E4901-00 | 8 - 1    | 5TL-E5620-00 | 12 - 16  | 14D-F1721-00-P3 | 17 - 4   | 14D-F334G-00 | 19 - 22  |
| 4YS-E1198-00 | 10 - 35  | 5MX-E3474-01 | 7 - 6    | 5TL-E4922-00 | 8 - 24   | 4VP-E5630-00 | 12 - 18  | 14D-F172W-00    | 17 - 1   | 5TL-F3416-00 | 19 - 28  |
| 5LW-E1310-00 | 1 - 25   | 5LW-E3475-00 | 5 - 2    | 4D0-E4923-00 | 8 - 13   | 5TL-E5650-10 | 12 - 5   | 14D-F173E-00    | 17 - 9   | 14D-F386J-00 | 33 - 11  |
| 5LW-E1351-00 | 1 - 26   | 14D-E3542-00 | 9 - 30   | 5TL-E4933-00 | 8 - 7    | 5MX-E5657-00 | 13 - 20  | 14D-F173E-10    | 17 - 9   | 14D-F4110-00 | 20 - 1   |
| 5MX-E1391-00 | 10 - 21  | 5TL-E3543-00 | 9 - 33   | 4D0-E4936-00 | 8 - 5    | 5MX-E5673-00 | 12 - 19  | 14D-F173E-20    | 17 - 9   | 14D-F4181-00 | 20 - 4   |
| 2D5-E1400-00 | 2 - 1    | 5TL-E3545-00 | 9 - 29   | 5TL-E4940-00 | 8 - 2    | 2D5-E6111-00 | 13 - 1   | 14D-F173E-30    | 17 - 9   | 14D-F4188-00 | 20 - 2   |
| 2D5-E1412-00 | 2 - 2    | 5MX-E3556-01 | 7 - 3    | 4D0-E4943-00 | 8 - 11   | 5TL-E6611-02 | 13 - 24  | 14D-F173F-00    | 17 - 10  | 14D-F4311-00 | 20 - 6   |
| 2D5-E1422-00 | 2 - 6    | 5LW-E3569-00 | 6 - 20   | 5TL-E4945-00 | 8 - 37   | 14D-E6620-00 | 13 - 23  | 14D-F173F-10    | 17 - 10  | 14D-F4312-00 | 20 - 7   |
| 5MX-E1603-00 | 2 - 15   | 5MX-E3575-01 | 7 - 20   | 5TL-E4947-00 | 8 - 9    | 5TL-E7211-00 | 14 - 7   | 14D-F173F-20    | 17 - 10  | 14D-F4313-00 | 20 - 8   |

NUMERICAL INDEX

| PART NO.        | REF. NO. | PART NO.        | REF. NO. | PART NO.     | REF. NO. | PART NO.     | REF. NO. | PART NO.    | REF. NO. | PART NO.    | REF. NO. |
|-----------------|----------|-----------------|----------|--------------|----------|--------------|----------|-------------|----------|-------------|----------|
| 14D-F4500-00    | 20 - 12  | 5TL-F6240-00    | 25 - 8   | 14D-F832L-20 | 28 - 22  | 5TL-H3941-10 | 34 - 2   | 90111-06807 | 9 - 7    | 90201-12190 | 18 - 4   |
| 14D-F4514-00    | 20 - 5   | 5TL-F6241-00    | 25 - 9   | 14D-F832L-30 | 28 - 22  | 5TL-H3947-10 | 34 - 3   | 90111-08815 | 23 - 2   | 90201-12688 | 15 - 13  |
| 4YY-F4610-00    | 20 - 15  | 5TL-F6270-00    | 25 - 23  | 14D-F832P-00 | 28 - 27  | 5TL-H3955-20 | 34 - 6   | 90116-08806 | 1 - 5    |             | 29 - 5   |
| 4YY-F4612-00    | 20 - 16  | 2P2-F6280-00    | 25 - 10  | 14D-F832P-10 | 28 - 27  | 14D-H3973-00 | 34 - 1   | 90119-05071 | 36 - 17  | 90201-14016 | 24 - 16  |
| 5TL-F4705-00    | 21 - 13  | 2P2-F6290-00    | 25 - 11  | 14D-F832P-20 | 28 - 27  | 5TL-H3975-31 | 34 - 10  | 90119-05804 | 11 - 19  | 90201-15008 | 14 - 4   |
| 14D-F470F-00    | 21 - 2   | 14D-F6311-00    | 25 - 12  | 14D-F832P-30 | 28 - 27  | 5TL-H397X-10 | 34 - 4   | 90119-06044 | 16 - 5   | 90201-15016 | 14 - 5   |
| 5TL-F4726-00    | 21 - 11  | 14D-F6331-00    | 25 - 22  | 14D-F834E-00 | 32 - 11  | 5TL-H3980-10 | 34 - 16  |             | 27 - 11  | 90201-154E8 | 12 - 13  |
| 5TL-F4727-00    | 21 - 10  | 14D-F6351-00    | 25 - 14  | 14D-F8356-00 | 15 - 15  | 5TL-H3980-20 | 34 - 22  | 90119-06182 | 7 - 21   | 90201-16008 | 13 - 16  |
| 14D-F4730-00    | 21 - 1   | 5MX-F637G-00    | 25 - 15  | 14D-F836K-00 | 28 - 9   | 1P7-H411V-00 | 32 - 9   | 90119-06211 | 7 - 22   | 90201-20276 | 24 - 17  |
| 14D-F473R-00    | 21 - 4   | 5TL-F7111-00-33 | 27 - 1   | 14D-F836L-00 | 28 - 10  | 2D5-H4147-00 | 32 - 4   | 90149-10801 | 23 - 14  | 90206-14093 | 24 - 13  |
| 14D-F4741-00    | 21 - 3   | 4YY-F7114-00    | 25 - 16  | 14D-F8371-00 | 33 - 13  | 14D-H4300-00 | 32 - 1   | 90153-06803 | 1 - 6    | 90208-12050 | 13 - 21  |
| 14D-F4773-00-35 | 21 - 20  |                 | 27 - 18  | 14D-F8385-00 | 28 - 12  | 14D-H430A-00 | 32 - 5   | 90159-03102 | 31 - 5   | 90208-21002 | 14 - 8   |
| 5TL-F478E-00    | 21 - 19  | 5MX-F7114-00    | 15 - 6   | 14D-F8395-00 | 28 - 14  | 14D-H4312-00 | 32 - 8   | 90159-06033 | 11 - 35  | 90214-14002 | 13 - 19  |
| 5TL-F4792-00    | 21 - 14  | 5MX-F7121-00    | 10 - 2   | 14D-F8415-00 | 27 - 8   | 5HV-H4314-00 | 32 - 2   |             | 21 - 18  | 90249-10002 | 27 - 2   |
| 5TL-F4799-11    | 21 - 17  | 5LW-F7254-00    | 27 - 6   | 5TL-H1410-10 | 29 - 2   | 2D5-H4397-00 | 32 - 7   | 90159-06817 | 17 - 7   | 90249-12008 | 25 - 21  |
| 5TL-F5168-00-33 | 22 - 1   | 5TL-F7311-00-33 | 27 - 14  | 5TL-H1450-00 | 29 - 1   | 14D-H454E-00 | 28 - 18  | 90163-05803 | 7 - 14   | 90280-03017 | 2 - 11   |
| 5TL-F5181-00    | 15 - 12  | 14D-F7414-00    | 27 - 10  | 5TL-H1800-00 | 30 - 1   | 1P7-H466J-00 | 32 - 6   | 90167-04021 | 31 - 4   | 90340-12808 | 10 - 34  |
| 3AY-F5181-01    | 22 - 8   | 14D-F7430-00    | 27 - 19  | 5TL-H1801-00 | 30 - 2   | 14D-H4710-00 | 33 - 1   | 90170-05302 | 3 - 10   | 90340-32805 | 11 - 3   |
| 5TL-F5190-00    | 22 - 11  | 14D-F7431-00    | 27 - 20  | 3UH-H1828-01 | 30 - 4   | 14D-H4711-00 | 33 - 6   | 90170-10317 | 13 - 7   | 90380-15800 | 12 - 12  |
| 5MX-F530K-00    | 24 - 7   | 14D-F7432-00    | 27 - 21  | 5TL-H182L-00 | 30 - 5   | 4AC-H4714-00 | 33 - 2   | 90175-06013 | 25 - 20  | 90387-06052 | 6 - 25   |
| 5LW-F5326-01    | 24 - 4   | 14D-F7440-00    | 27 - 27  | 5TL-H182M-00 | 30 - 3   | 14D-H4721-00 | 33 - 5   | 90176-08805 | 1 - 19   | 90387-067V1 | 6 - 6    |
| 5TL-F5338-00-33 | 24 - 1   | 14D-F7441-00    | 27 - 28  | 5TL-H183G-00 | 30 - 6   | 14D-H4723-00 | 33 - 7   | 90179-08577 | 9 - 13   | 90387-06891 | 7 - 23   |
| 5MX-F533A-00    | 24 - 12  | 14D-F7442-00    | 27 - 29  | 5TP-H1940-00 | 36 - 10  | 14D-H4743-00 | 33 - 4   | 90179-12248 | 29 - 6   | 90387-068S1 | 16 - 2   |
| 5MX-F5351-00    | 24 - 10  | 14D-F7481-00    | 27 - 7   | 5TL-H1960-00 | 36 - 7   | 5TL-H5540-10 | 36 - 1   | 90179-25033 | 19 - 29  | 90387-07811 | 28 - 4   |
| 5LW-F5355-00    | 24 - 11  | 5TL-F8100-00    | 15 - 17  | 3C1-H2100-00 | 35 - 1   | 5LL-H5546-00 | 36 - 2   | 90183-05807 | 16 - 7   |             | 28 - 7   |
| 4C9-F580U-00    | 23 - 3   | 14D-F8311-00-P0 | 28 - 1   | 5TL-H2116-00 | 35 - 6   | 14D-H5752-00 | 36 - 14  |             | 17 - 5   | 90387-08754 | 15 - 7   |
| 5TL-F582U-20    | 23 - 1   | 14D-F8311-00-P1 | 28 - 1   | 14D-H2129-00 | 35 - 2   | 4US-H5753-00 | 36 - 16  |             | 21 - 7   | 90387-10277 | 22 - 7   |
| 5TL-F583T-21    | 26 - 4   | 14D-F8311-00-P2 | 28 - 1   | 5TL-H2131-00 | 35 - 3   | 5ER-H5757-00 | 36 - 15  |             | 25 - 6   | 90387-16811 | 13 - 15  |
| 5TL-F5852-00    | 26 - 7   | 14D-F8311-00-P3 | 28 - 1   | 14D-H2150-00 | 35 - 4   | 5TL-W0041-01 | 26 - 5   |             | 27 - 9   | 90401-10812 | 26 - 2   |
| 5TL-F5854-00    | 26 - 6   | 14D-F8312-00    | 28 - 5   | 5TL-H2151-00 | 35 - 5   | 4C9-W0045-00 | 23 - 9   |             | 28 - 2   | 90413-05014 | 9 - 35   |
| 5TL-F5855-00    | 26 - 10  | 14D-F831Y-00    | 28 - 23  | 5TL-H2310-01 | 36 - 3   | 5YP-W0047-50 | 23 - 5   | 90185-08803 | 27 - 16  | 90430-06014 | 1 - 7    |
| 5TL-F5867-00    | 26 - 9   | 14D-F831Y-10    | 28 - 23  | 5MX-H2370-00 | 36 - 6   | 5YP-W0048-50 | 23 - 8   | 90185-10808 | 25 - 3   | 90430-08119 | 10 - 23  |
| 14D-F5872-00    | 26 - 1   | 14D-F831Y-20    | 28 - 23  | 14D-H252E-00 | 35 - 7   | 5YP-W0057-00 | 23 - 4   | 90185-10811 | 22 - 9   | 90445-08834 | 17 - 6   |
| 14D-F5875-00    | 19 - 30  | 14D-F831Y-30    | 28 - 23  | 14D-H2590-00 | 35 - 10  | 14D-WE445-00 | 7 - 9    | 90185-12802 | 15 - 14  | 90462-08806 | 7 - 24   |
| 14D-F5876-00    | 19 - 31  | 14D-F832B-00    | 28 - 24  | 5TL-H2911-20 | 34 - 12  | 90101-06278  | 24 - 14  | 90185-14814 | 24 - 15  | 90462-10802 | 11 - 15  |
| 5YP-F5917-00    | 23 - 6   | 14D-F832B-10    | 28 - 24  | 5HV-H3311-00 | 32 - 3   | 90105-06804  | 6 - 17   | 90201-06057 | 6 - 27   | 90464-60810 | 7 - 25   |
| 5YP-F5919-00    | 23 - 11  | 14D-F832B-20    | 28 - 24  |              | 33 - 3   | 90105-08048  | 15 - 8   |             | 28 - 21  | 90465-10037 | 36 - 5   |
| 5YP-F5924-00    | 23 - 12  | 14D-F832B-30    | 28 - 24  | 5TF-H3350-00 | 36 - 11  | 90105-08121  | 18 - 2   | 90201-06060 | 13 - 2   | 90467-08075 | 9 - 32   |
| 5YP-F5925-01    | 23 - 10  | 14D-F832C-00    | 28 - 25  | 5TP-H3371-00 | 36 - 12  | 90105-10036  | 25 - 2   | 90201-06830 | 35 - 9   |             | 20 - 11  |
| 5YP-F5937-00    | 23 - 7   | 14D-F832C-10    | 28 - 25  | 14D-H3509-00 | 31 - 6   | 90105-10066  | 15 - 4   | 90201-081R9 | 9 - 14   | 90467-08801 | 9 - 31   |
| 5YP-F5939-00    | 23 - 13  | 14D-F832C-20    | 28 - 25  | 14D-H3510-00 | 31 - 1   | 90109-063F1  | 16 - 6   | 90201-08609 | 1 - 17   | 90467-09006 | 1 - 28   |
| 14D-F6110-01    | 25 - 1   | 14D-F832C-30    | 28 - 25  | 14D-H3511-00 | 31 - 2   |              | 21 - 6   | 90201-086P8 | 9 - 17   |             | 20 - 10  |
| 14D-F6143-00-P0 | 25 - 4   | 14D-F832D-00    | 28 - 26  | 2GV-H3517-00 | 31 - 8   |              | 27 - 12  |             | 9 - 21   | 90467-10008 | 20 - 9   |
| 14D-F6143-00-P1 | 25 - 4   | 14D-F832D-10    | 28 - 26  | 14D-H3535-00 | 33 - 12  | 90109-06577  | 34 - 20  | 90201-10018 | 12 - 7   | 90467-11106 | 10 - 7   |
| 14D-F6143-00-P2 | 25 - 4   | 14D-F832D-20    | 28 - 26  | 14D-H353F-00 | 31 - 3   | 90109-06814  | 34 - 14  | 90201-10118 | 26 - 3   |             | 11 - 7   |
| 14D-F6143-00-P3 | 25 - 4   | 14D-F832D-30    | 28 - 26  | 14D-H3550-00 | 31 - 10  | 90109-08881  | 27 - 15  | 90201-10119 | 27 - 3   | 90467-12800 | 7 - 13   |
| 14D-F6145-00    | 25 - 5   | 14D-F832L-00    | 28 - 22  | 5TL-H3912-20 | 34 - 13  | 90110-06846  | 10 - 29  | 90201-10141 | 18 - 5   | 90467-13806 | 9 - 25   |
| 5TL-F6199-00    | 21 - 5   | 14D-F832L-10    | 28 - 22  | 5TL-H3922-00 | 34 - 19  | 90110-06849  | 10 - 30  | 90201-101J1 | 22 - 10  | 90480-01868 | 33 - 10  |

NUMERICAL INDEX

| PART NO.    | REF. NO. | PART NO.    | REF. NO. | PART NO.    | REF. NO. | PART NO.    | REF. NO. | PART NO. | REF. NO. | PART NO. | REF. NO. |
|-------------|----------|-------------|----------|-------------|----------|-------------|----------|----------|----------|----------|----------|
| 90480-10332 | 9 - 8    | 93102-26800 | 14 - 10  | 95027-06070 | 10 - 17  | 97707-50016 | 34 - 9   |          |          |          |          |
| 90480-13M24 | 9 - 34   | 93106-20816 | 22 - 3   | 95027-06100 | 1 - 24   |             | 34 - 11  |          |          |          |          |
| 90480-14817 | 6 - 24   | 93210-06800 | 13 - 9   |             | 10 - 10  | 97707-60430 | 6 - 14   |          |          |          |          |
| 90501-12743 | 27 - 22  | 93210-07802 | 24 - 6   | 95307-10600 | 18 - 3   | 97707-60530 | 6 - 12   |          |          |          |          |
|             | 27 - 30  | 93210-09800 | 1 - 4    | 95307-12700 | 13 - 22  |             | 6 - 13   |          |          |          |          |
| 90501-16003 | 25 - 19  | 93210-148H8 | 10 - 25  | 95607-06100 | 34 - 15  | 98502-04012 | 8 - 22   |          |          |          |          |
| 90501-16004 | 5 - 6    | 93210-15862 | 4 - 14   |             | 34 - 21  | 98507-05016 | 25 - 13  |          |          |          |          |
| 90506-12001 | 24 - 8   | 93210-25803 | 7 - 4    | 95607-08200 | 15 - 9   |             | 34 - 7   |          |          |          |          |
| 90506-15001 | 24 - 9   | 93210-29800 | 5 - 7    | 9560L-10200 | 15 - 5   | 98507-05020 | 5 - 3    |          |          |          |          |
| 90506-20514 | 27 - 17  | 93210-328G3 | 11 - 4   | 95707-06500 | 9 - 5    | 98507-05025 | 25 - 24  |          |          |          |          |
| 90506-35002 | 27 - 5   | 93210-448G4 | 1 - 16   |             | 21 - 12  | 98507-06014 | 9 - 26   |          |          |          |          |
| 90508-32768 | 12 - 11  | 93210-71462 | 1 - 13   |             | 21 - 15  |             | 25 - 18  |          |          |          |          |
| 90560-10292 | 22 - 2   | 93211-07800 | 10 - 14  |             | 28 - 20  | 98507-06016 | 29 - 4   |          |          |          |          |
| 91317-06012 | 4 - 13   | 93300-638Y6 | 13 - 8   | 95707-08500 | 9 - 19   |             | 36 - 8   |          |          |          |          |
| 91317-06014 | 35 - 8   | 93306-002X2 | 4 - 2    | 95707-10500 | 9 - 11   | 98507-06018 | 36 - 4   |          |          |          |          |
| 91317-06016 | 4 - 11   | 93306-003X7 | 15 - 11  |             | 24 - 5   | 98507-06020 | 6 - 10   |          |          |          |          |
| 91317-06020 | 1 - 14   | 93306-004XD | 14 - 9   | 95807-06010 | 36 - 13  |             | 6 - 26   |          |          |          |          |
|             | 29 - 3   | 93306-203YY | 13 - 5   | 95807-06012 | 15 - 16  | 98507-06025 | 6 - 15   |          |          |          |          |
|             | 34 - 18  |             | 14 - 12  |             | 19 - 32  | 98507-06040 | 25 - 17  |          |          |          |          |
| 91317-06025 | 12 - 17  | 93306-300X8 | 22 - 4   |             | 19 - 34  | 9850L-06008 | 34 - 5   |          |          |          |          |
|             | 26 - 11  | 93306-301YS | 14 - 2   |             | 20 - 3   | 9870M-03008 | 34 - 17  |          |          |          |          |
| 91317-08035 | 9 - 20   | 93306-305X3 | 2 - 8    | 95807-06014 | 16 - 3   | 98907-06010 | 11 - 10  |          |          |          |          |
| 91401-25015 | 27 - 25  | 93306-372Y2 | 2 - 9    | 95807-06030 | 28 - 19  | 9890L-06012 | 28 - 3   |          |          |          |          |
|             | 27 - 33  | 93306-809Y0 | 12 - 2   | 95807-08016 | 27 - 26  |             | 28 - 6   |          |          |          |          |
| 91701-08035 | 27 - 24  | 93310-528Y8 | 2 - 4    |             | 27 - 34  | 99001-08600 | 27 - 4   |          |          |          |          |
|             | 27 - 32  | 93311-315Y6 | 14 - 3   | 95817-06065 | 7 - 5    | 99009-15400 | 12 - 14  |          |          |          |          |
| 91810-14809 | 1 - 22   | 93410-20070 | 14 - 11  | 95817-08016 | 4 - 5    | 99009-17400 | 13 - 4   |          |          |          |          |
|             | 1 - 23   | 93440-45827 | 12 - 3   |             | 10 - 22  | 99480-05010 | 10 - 16  |          |          |          |          |
|             | 10 - 8   | 93450-16068 | 2 - 14   | 95817-08045 | 9 - 12   |             |          |          |          |          |          |
|             | 10 - 28  | 93501-04830 | 27 - 23  | 95817-10035 | 9 - 10   |             |          |          |          |          |          |
|             | 11 - 11  |             | 27 - 31  | 95827-06020 | 21 - 21  |             |          |          |          |          |          |
| 92903-10200 | 23 - 15  | 94107-14802 | 22 - 5   | 97007-06012 | 20 - 13  |             |          |          |          |          |          |
| 92907-05200 | 7 - 19   | 94108-14802 | 24 - 2   | 97007-06025 | 30 - 7   |             |          |          |          |          |          |
| 92907-05600 | 34 - 8   | 94207-14802 | 22 - 6   | 97707-40612 | 33 - 8   |             |          |          |          |          |          |
| 92907-06200 | 9 - 6    | 94208-14802 | 24 - 3   | 97707-50016 | 16 - 8   |             |          |          |          |          |          |
|             | 11 - 27  | 94568-B3090 | 4 - 6    |             | 17 - 2   |             |          |          |          |          |          |
| 92907-06600 | 6 - 11   | 94700-00828 | 1 - 20   |             | 17 - 8   |             |          |          |          |          |          |
|             | 6 - 16   | 95027-06010 | 13 - 3   |             | 21 - 9   |             |          |          |          |          |          |
|             | 9 - 27   | 95027-06012 | 6 - 19   |             | 25 - 7   |             |          |          |          |          |          |
|             | 20 - 14  |             | 12 - 9   |             | 27 - 13  |             |          |          |          |          |          |
|             | 30 - 8   | 95027-06016 | 10 - 18  |             | 28 - 8   |             |          |          |          |          |          |
|             | 36 - 9   | 95027-06025 | 11 - 12  |             | 28 - 11  |             |          |          |          |          |          |
| 92907-08200 | 1 - 18   | 95027-06035 | 11 - 13  |             | 28 - 13  |             |          |          |          |          |          |
| 93101-21803 | 13 - 11  | 95027-06040 | 11 - 25  |             | 28 - 15  |             |          |          |          |          |          |
| 93102-15801 | 12 - 15  | 95027-06050 | 10 - 11  |             | 28 - 17  |             |          |          |          |          |          |
| 93102-17803 | 13 - 6   | 95027-06060 | 10 - 9   |             | 31 - 9   |             |          |          |          |          |          |
| 93102-19800 | 10 - 13  |             | 11 - 14  |             | 32 - 10  |             |          |          |          |          |          |
| 93102-22810 | 10 - 19  |             | 11 - 26  |             | 33 - 14  |             |          |          |          |          |          |